



无锡宝露重工有限公司

WUXI BAOLU HEAVY INDUSTRY CO.,LTD.

开拓创新 锻造精品

WE CREATE PERFECTION AND INNOVATION





10 年宝露

TEN YEARS OF HISTORY

TEN YEARS OF HISTORY

- ABOUT BAOLU ■ 宝露简介
- COMPANY LOCATION ■ 公司方位
- HISTORY ■ 发展历程
- ORGANIZATION STRUCTURE ■ 组织架构

宝露简介

About BaoLu

无锡宝露重工有限公司坐落在风景秀丽的太湖之滨，地处无锡西北郊，新长铁路脚下，南邻沪宁铁路、312国道和京杭大运河，水陆交通十分便利。

公司属新兴港商合资企业，占地面积9万平米，注册资本1280万美元，总投资3000多万美元，现有职工180余人，研发技术类人员占比12%。公司具备完善的锻造、热处理调质、机加工工艺。

Baolu is located near the famous beautiful landscape Taihu Lake in the north-west of Wuxi City. Centered the Xinyi-Changxing Railway, Shanghai-Nanjing Railway and the Beijing-Hangzhou Grand Canal, the transportation of Wuxi is very convenient.

We are a joint-venture company by Chinese and Hongkong, with 12.8 million dollars registered capital, over 30.0 million dollars total investment and 90,000 m² plant area. Baolu has a complete ability in forging, heat treatment and machining.



公司方位

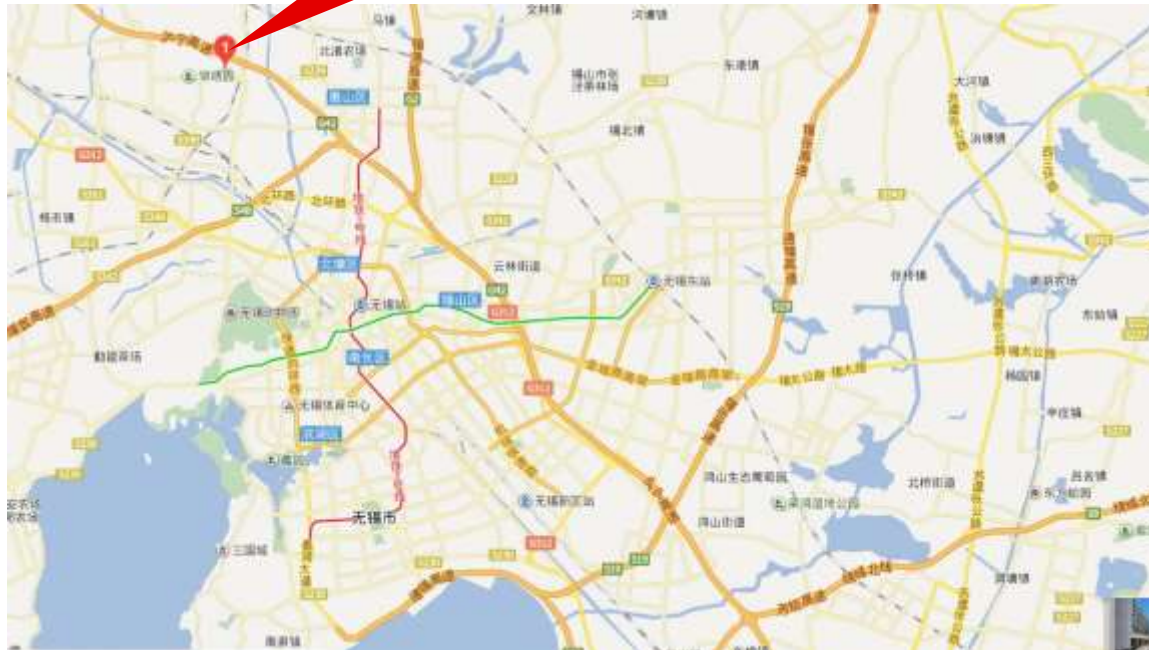
COMPANY
LOCATION

宝露重工

WUXI BAOLU HEAVY INDUSTRY

中国江苏省无锡市惠山区前
洲工业园北区宝露路8号

NO.8 Baolu Road ,Qianzhou
Industrial Park ,Huishan District
,Wuxi City



- > 1.附近世界500强企业有150家左右
- > 2.距离沪蓉高速入口4KM
- > 3.距离惠山高铁站5KM
- > 4.距离上海火车站140KM
- > 5.距离上海虹桥机场140km

- > Nearly 150 global top 500 companies around Wuxi.
- > 4 km to the Shanghai-Chengdu highway entry.
- > 5 km to the Huishan high-speed train station.
- > 140 km to the Shanghai railway station.
- > 140 km to the Shanghai hongqiao airport.



厂区平面图

THE PLANT LAYOUT

宝露重工

BAOLU HEAVY INDUSTRY

总占地面积：**90,901**平方米
生产区域面积：**64,536.56**平方米
办公区域面积：**5,292.06**平方米
绿化面积：**18,180.2**平方米

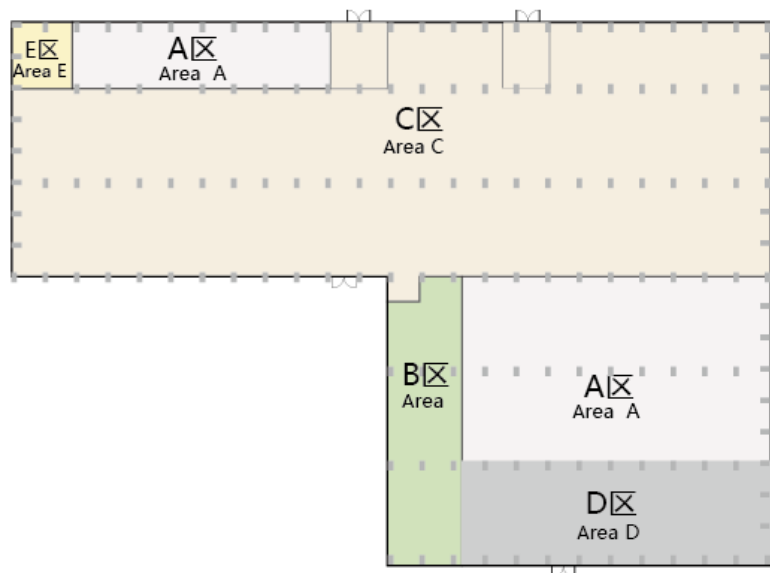
- Total area: **90,901** m²
- Production area: **64,536.56** m²
- Office area: **5,292.06** m²
- Green area: **18,180.2** m²





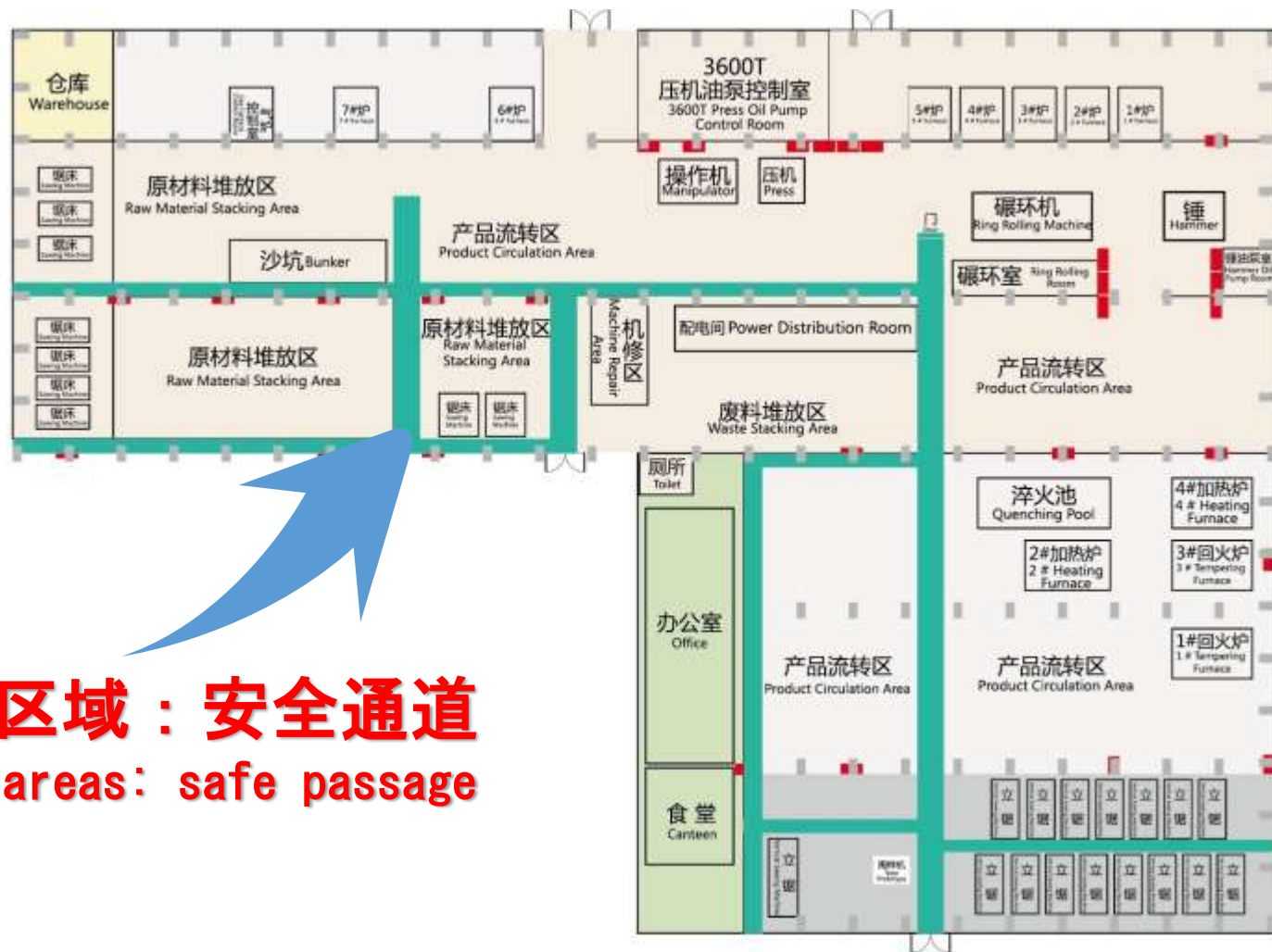
车间平面图

WORKSHOP LAYOUT



热加工（锻造热处理车间）

HOT WORKING
(FORGING & HEAT TREATMENT WORKSHOP)



绿色区域：安全通道
Green areas: safe passage

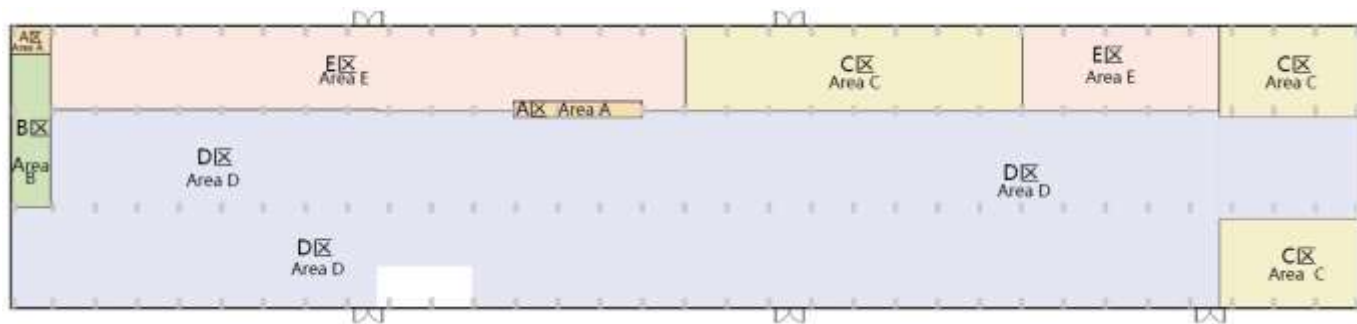


车间平面图

WORKSHOP LAYOUT

冷加工（机械加工车间）

COLD WORKING
(MECHANING WORKSHOP)



绿色区域：安全通道
Green areas: safe passage

发展历程

HISTORY

2006

公司成立

Establishment
of the company

2009

机加工车间竣工产值突破亿元,进入中海油的三级供应商系统
The machining workshop was completed and the output value exceeded 100 million RMB, the company entered Cnooc's tertiary supplier system.

2010

机加工车间投入使用,进入北京博世力士乐供应商系统,试制风电齿轮箱锻件,生产风力发电机主轴
The machining workshop put into use, the company entered the BOSCH(Beijing)'s supplier system, started the trial production of wind power gear box forgings and the normal production of wind power mani shaft.

2008

研发投产风电齿圈锻件,与国内、数家顶尖轴承企业建立合作通过ISO9001体系认证,取得压力容器锻件生产许可证,锻压协会证书
The wind power gear box forgings had been developed and put into production. Then the company established cooperation with several top bearing company in China , passed the ISO9001 certification, obtained the production license for pressure vessel forgings and the Forging Association certification.

2011

2007

正式投产第一个产品
The first product put into production.

荣获无锡市清洁生产审核证书,齿轮箱锻件进入量产,涉及风电及冶金行业
The company obtained the clean production audit certification . The gearbox forgings started mass production . The company formal entered into wind power and metallurgical industries

发展历程

HISTORY

2012

通过德国、意大利、挪威、美国、日本船级社认证,批量生产异形回转支承

The company was approved by Classification Society of Germany , Italy , Norway , the United States , Japan and started the mass production of special-shaped slewing bearing.

2015

入驻全新综合办公楼,成为中石化合格供应商通过ISO14001、DHSAS18001、美国API20B认证,获得无锡市知名商标

The new integrated office building was completed, the company entered the SINOPEC's suppliers system ,passed the ISO14001,DHSAS18001,API20B certification . The BAOLU became a famous trademark of Wuxi.

2014

安全生产标准化证书
The company obtained the production safety standardization certification.

2016

进入ZF供应商系统,通过歌美飒审核、认证通过国家高新技术企业
The company entered the ZF's suppliers system and passed the audit of GEMESA and became the national high-tech enterprise .

2013

通过韩国、法国、CCS船级社认证、特种设备制造许可证、重合同守信用企业

The company was approved by Classification Society of Korea , France , obtained the production license for special equipment , appraised as " valuing contract and keeping promises company" .

发展历程

HISTORY

2017

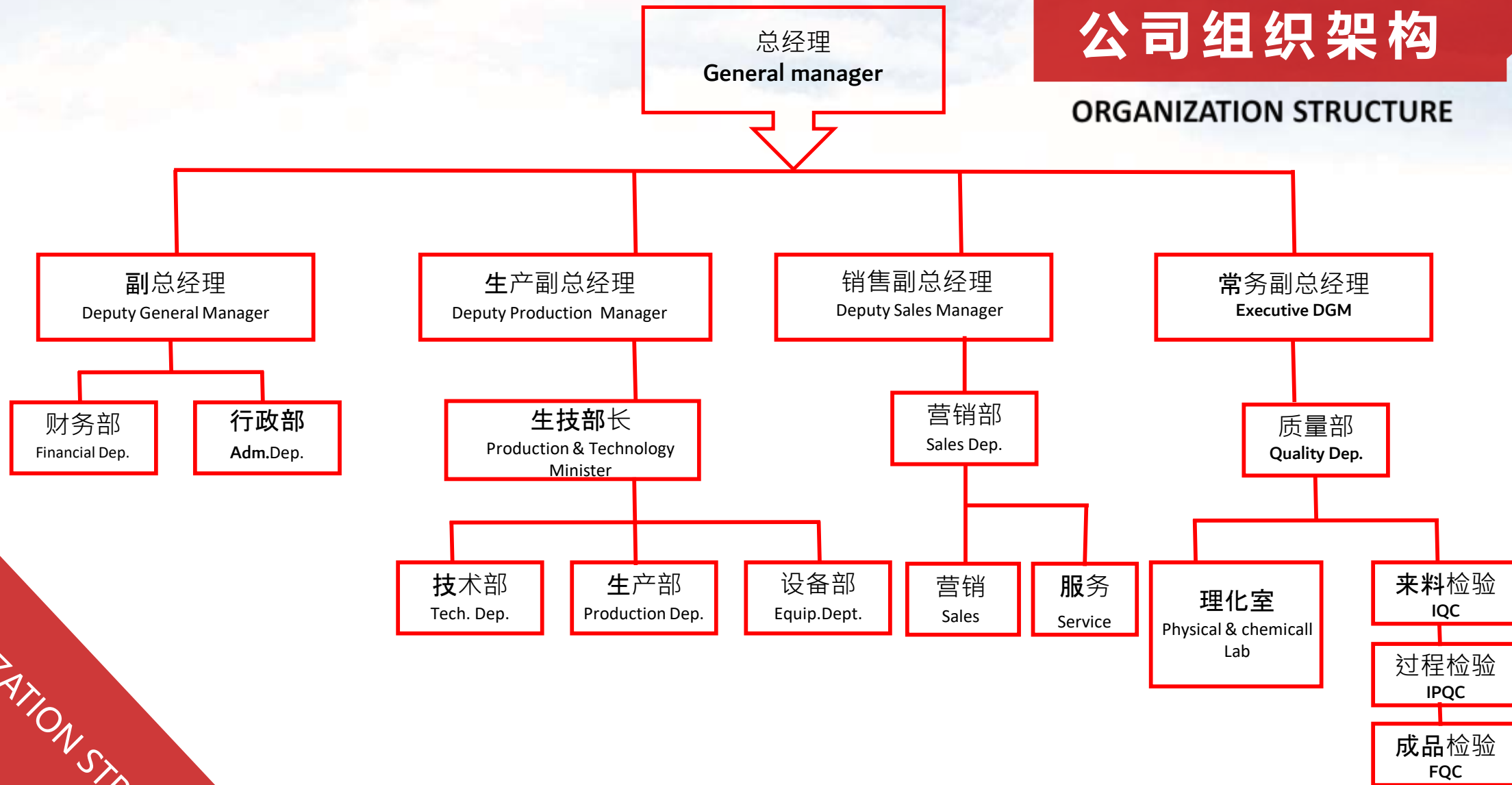
投资亿元的新能源项目启动、被评为五星级职代会、成立党支部、成立前小“宝露合唱团”
The new energy project with an investment of 100 million yuan has launched, xxx was appraised as a five-star workers' conference, established the Communist Party Branch, established the "Baolu Glee Club" in QianZhou primary school.

2018

精彩继续
To be continue...

公司组织架构

ORGANIZATION STRUCTURE



ORGANIZATION STRUCTURE



企业实力

ENTERPRISE STRENGTH

■ 检测能力 INSPECTION AND TEST CAPABILITY

■ 装备能力 EQUIPMENT CAPABILITY

■ 专利证书 PATENT CERTIFICATES

检测能力

INSPECTION AND TEST CAPABILITY



洛氏硬度计
Rockwell hardness tester



布氏硬度计
Brinell hardness tester



便携式布氏硬度计
Portable brinell hardness tester



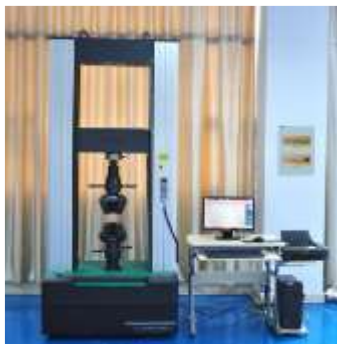
德国直读光谱仪
Direct-reading spectrometer



德国莱卡显微镜
Leica Microscope

检测能力

INSPECTION AND TEST CAPABILITY



电子万能试验机
Electronic universal testing machine



端淬试验机
Quenching machine



自动冲击试验机
Auto Impact testing machine



德国斯派克便携式光谱仪
German Spike portable spectrometer



美国GE超声波探伤仪
American GE ultrasonic flaw detector



磨平机
Belt grinder machine

装备能力

EQUIPMENT CAPABILITY



3600T压机 1台
3600T Hydraulic Press 1set

锻造设备

FORGING EQUIPMENT



10000T液压机 1台
10000T Hydraulic Press 1set

装备能力

EQUIPMENT CAPABILITY

锻造设备

FORGING EQUIPMENT



4500mm数控碾环机 1台
4500mm CNC Ring Rolling Machine 1set



10000mm数控碾环机 1台
10000mm CNC Ring Rolling Machine 1set



4T电液锤 1台
4T Electro-hydraulic Hammer 1set

装备能力

EQUIPMENT CAPABILITY

热处理设备

HEAT TREATMENT EQUIPMENT



淬火池 1台
Quenching Pool 1set



热处理加热炉 4台
Heat Treatment Furnace 4sets



天然气正火炉 2台
Natural Gas Normalizing Furnace 2sets

装备能力

EQUIPMENT CAPABILITY

机加工设备

MACHINING EQUIPMENT



5m数控龙门钻铣床 1台
5m CNC Gantry Drilling and Milling
Machine 1set



数控立式车床 10台
CNC Vertical Lathe 10sets



数控卧式车床 16台
CNC Horizontal Lathe 16sets

装备能力

EQUIPMENT CAPABILITY

机加工设备

MACHINING EQUIPMENT



深孔钻镗床 1台
Deep Hole Drilling and Boring
Machine 1set



钻床 3台
Drilling Machine 3sets



磨床 1台
Grinding Machine 1set



九大船级社资质

CERTIFICATIONS

专利证书

PATENT CERTIFICATES



专利证书

THE PATENT CERTIFICATES



专利证书

THE PATENT CERTIFICATES



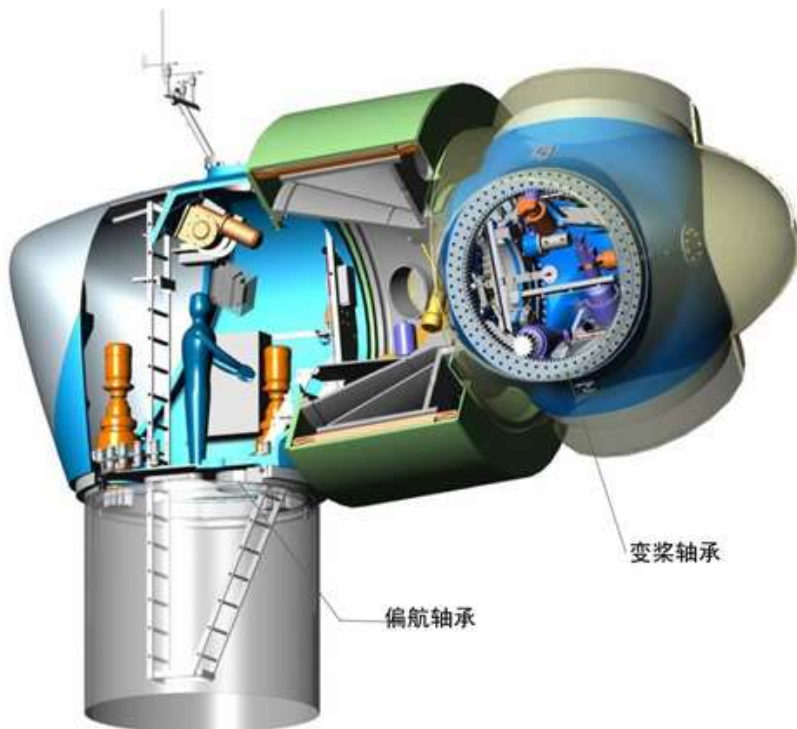


企业产品 PRODUCTS

应用领域 APPLICATION

- 风力发电、齿轮传动
 - 石油、化工设备及压力容器
 - 船舶工程、海洋平台机械设备
 - 工程机械、矿山机械、重型机械
 - 冶金机械、港口机械
-
- Wind power generation, Gear transmission
 - Petroleum, Chemical industry equipment and Pressure vessels
 - Marine engineering, Offshore-platform mechanical equipment
 - Engineering machinery, Mining machinery, Heavy machinery
 - Metallurgical machinery, Port machinery

配套变桨、偏航轴承环锻件



变桨偏航系统
Variable propeller yaw
system



变桨轴承
pitch bearings



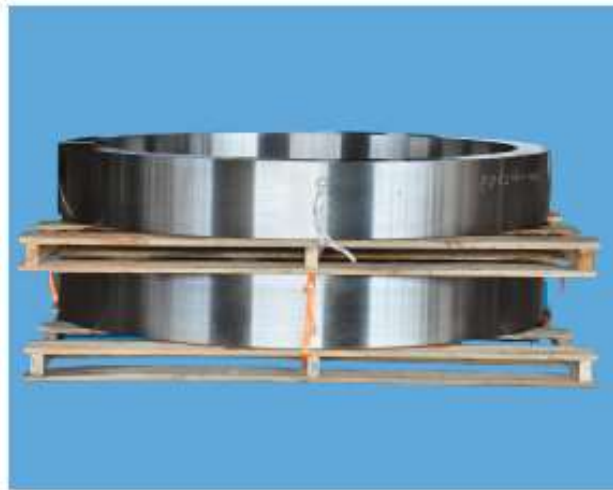
偏航轴承
yaw bearing



变桨偏航轴承圈锻件
Wind Power Bearing Ring

配套齿轮箱锻件

WIND POWER PRODUCTS

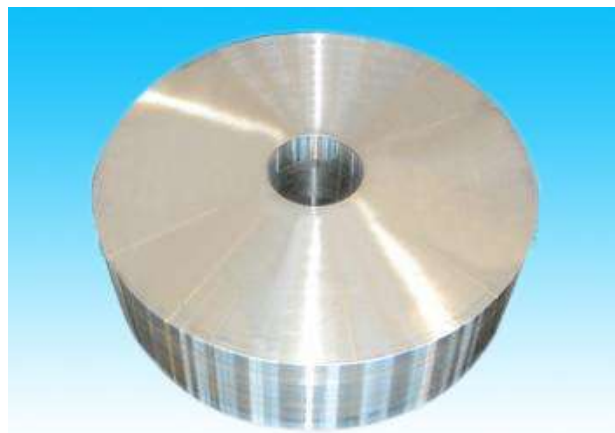


齿圈锻件
Wind Power Gear Ring

空心轴锻件
Hollow Shaft



风力发电齿轮箱
WIND POWER GEARBOX



齿轮锻件
Wind Power Gear

太阳轴锻件
Gear Shaft

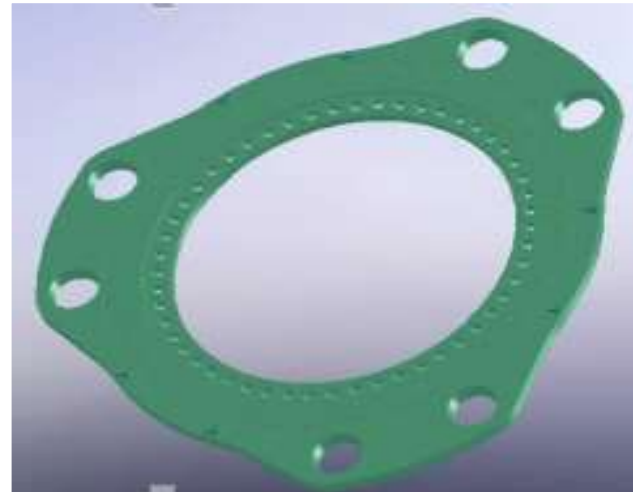


风电产品（成品）

WIND POWER PRODUCTS



风电主轴
Wind Power Main Shaft



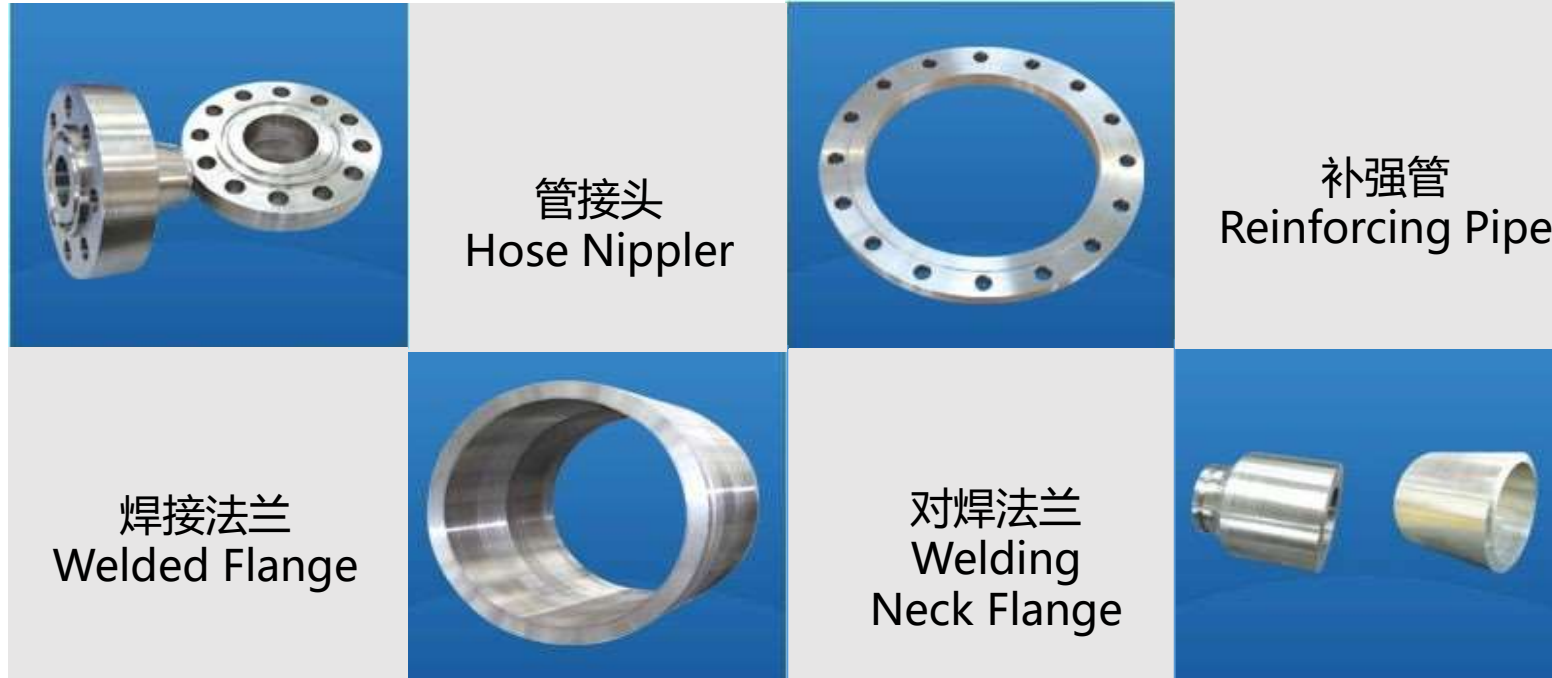
风轮锁紧盘
Wind Wheel Locking Plate



风电加强环
Wind Wheel Locking Plate

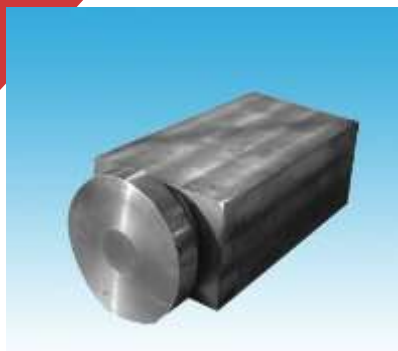
石油石化产品

PETROLEUM AND PETROCHEMICAL PRODUCTS



石油石化产品

PETROLEUM AND PETROCHEMICAL PRODUCTS



锻制三通
Large Forged
Tee



盲板
Blind Plate

阀门接头
Valve
Connector



阀体
Valve Body



套管头
Casing Head

船用产品

MARINE PRODUCTS



船用中间轴
Marine Intermediate Shaft



船用轴
Marine Shaft

质量保证--- 我们的关注点

Quality Assurance----Our Focus

一、6s:1.整理 2.整顿 3.清扫 4.清洁 5.素养 6.安全

6S: SEIRI SEITON SEISO SETKE SHITSUKE SECURITY

二、质量方针 (Quality Policy)

以人为本、以质为先、科学管理、持续创新

People oriented, Quality first, Scientific management, Continuous innovation



PROCEDURES

主要合作客户

OUR MAIN CUSTOMERS

SIEMENS Gamesa
RENEWABLE ENERGY



Rexroth
Bosch Group



HITACHI
Inspire the Next
日立



中国北车股份有限公司
China CNR Corporation Limited



LYC
—中国·洛轴—



 **洛阳风动工具有限公司**
LUOYANG PNEUMATIC TOOL CO., LTD



PROCEDURES

主要合作客户

OUR MAIN CUSTOMERS



PROCEDURES

这里是为您准备的~
This position is reserved for you.

愿

景

VISION

目标 TARGET

力争2020年进入中国锻造企业综合实力排名前**十**位

Our company's overall strength will strive to enter the top ten in the whole forging enterprises of China in 2020

使命 MISSION

开拓创新、锻造精品，满足客户、奉献社会

Pioneering and innovating, forging excellent products, satisfying customers and serving the society

愿景 VISION

成为**全球**知名锻造企业，代表中国参与全球竞争

Become a well-known global forging enterprises representing China in global competition



PROCEDURES

感 谢 您 的 观 赏

你值得信赖的合作伙伴！
Your trust-worthy partner !

THE END

TEL : 0510-68916828

FAX : 0510-83385118

E-mail : info@wx-bl.com

宝露重工 <http://www.wx-bl.com/>