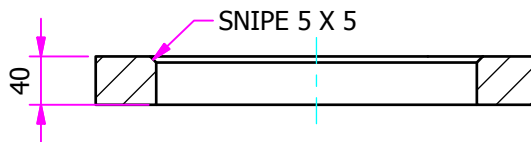
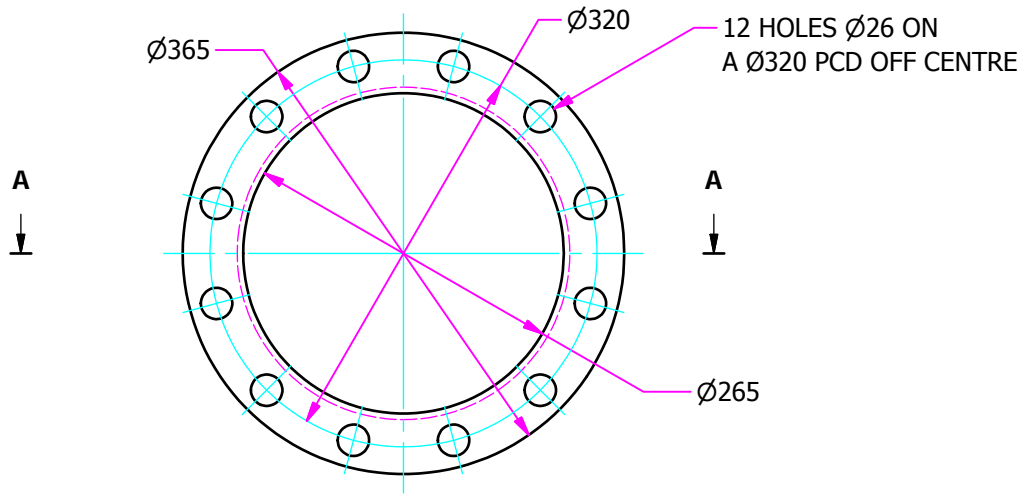


UNIT QTY	PART NUMBER	DESCRIPTION	MATERIAL	THICKNESS	PROJECT	DRAWN	CHK BY	CHK DATE
1.00 ul	E1A1111913-8	PLATE	A515 GR.70	40.00 mm	FA14017	JL.H	G.L	2014/11/17

CNC REFERENCE				SHT 8 OF 22	SHOP ORDER NUMBER			
OPERATIONS			QTY COMP	CHECK	CUTTING SHEET MODIFIED ON REV 1	TOTAL QTY 3.00 ul	LOCATION ELEVATION	
1	GUILLOTINE/SAW						3.00 ul	AS DRAWN
2	PLASMA/LASER							
3	PUNCH/DRILL/NOTCH						0.00 ul	OPP. HAND
4	BEND/ROLL/CHAMFER							

全部 12.5 /

ESTIMATED WEIGHT = 13.5 KG EACH



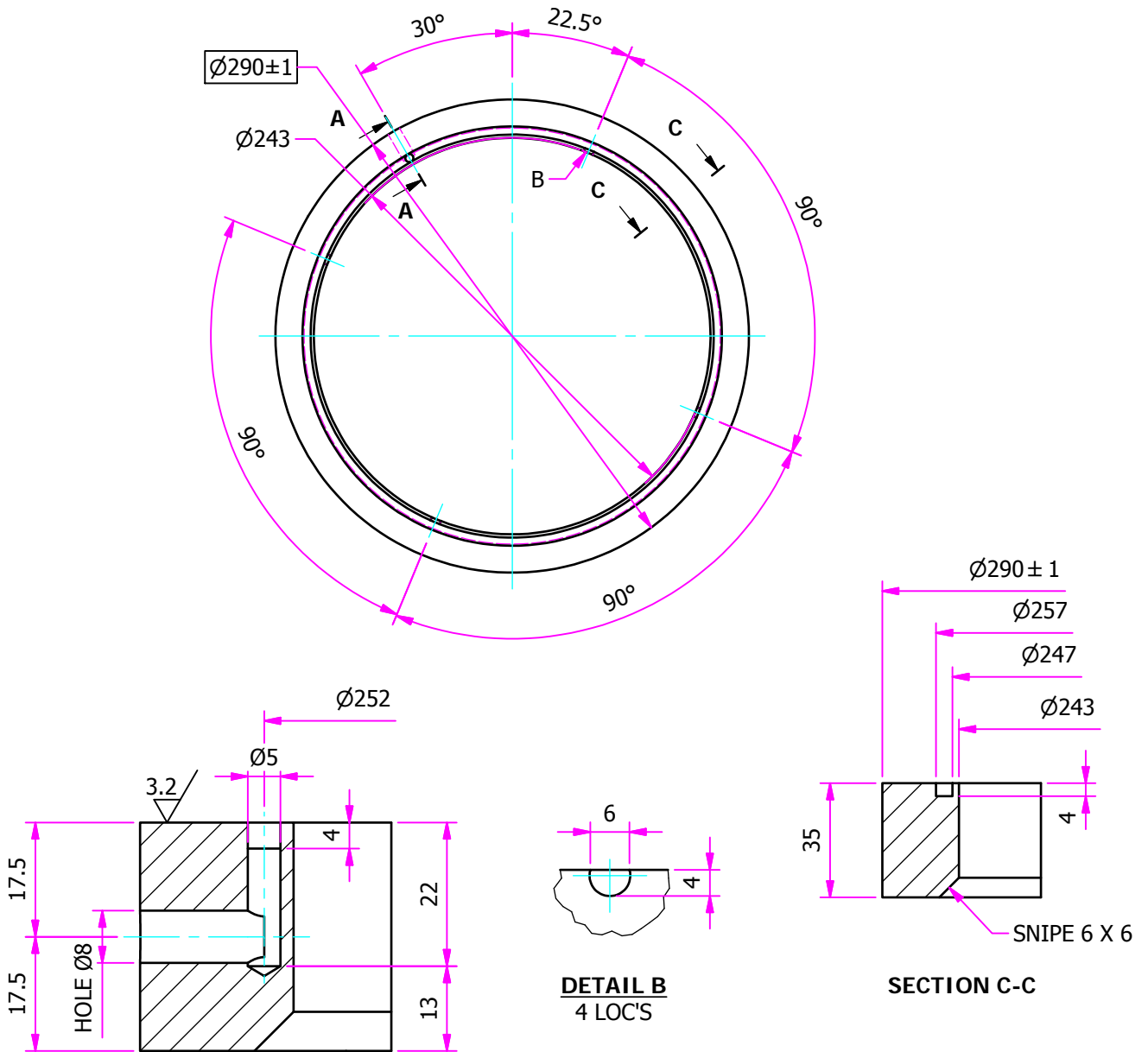
SECTION A-A

UNIT QTY	PART NUMBER	DESCRIPTION	MATERIAL	THICKNESS	PROJECT	DRAWN	CHK BY	CHK DATE
1.00 ul	E1A1111913-9	PLATE	A515 GR.70	35.00 mm	FA14017	JL.H	G.L	2014/11/17

CNC REFERENCE				SHT 9 OF 22	SHOP ORDER NUMBER			
OPERATIONS			QTY COMP	CHECK	CUTTING SHEET MODIFIED ON REV 1	TOTAL QTY 3.00 ul	LOCATION VIEW ON A-A	
1	GUILLOTINE/SAW						3.00 ul	AS DRAWN
2	PLASMA/LASER							
3	PUNCH/DRILL/NOTCH						0.00 ul	OPP. HAND
4	BEND/ROLL/CHAMFER							

其他  $\sqrt{6.3}$

ESTIMATED WEIGHT = 5.2 KG EACH



SECTION A-A

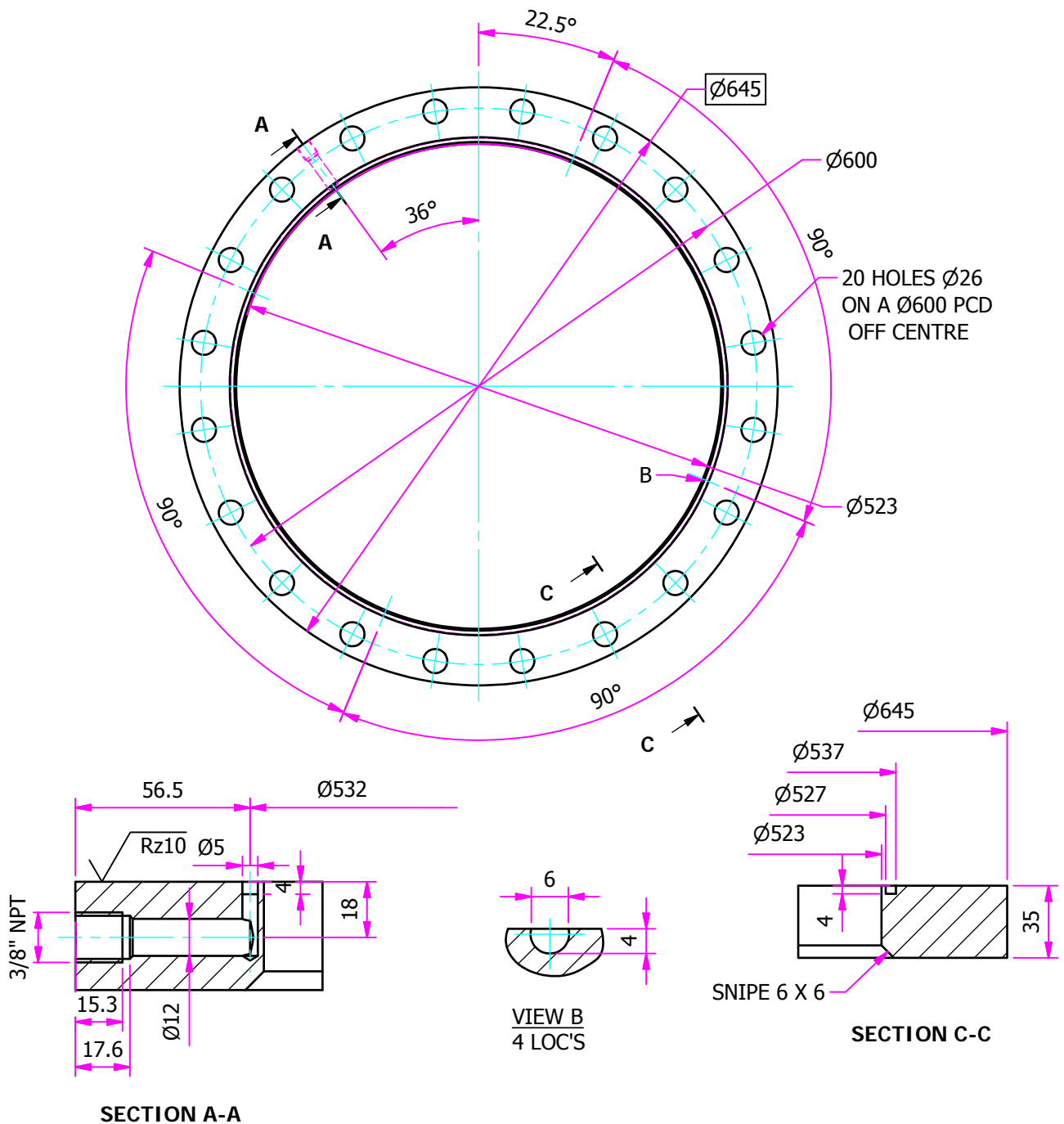
DETAIL B  
4 LOC'S

SECTION C-C

UNIT QTY	PART NUMBER	DESCRIPTION	MATERIAL	THICKNESS	PROJECT	DRAWN	CHK BY	CHK DATE
1.00 ul	E1A1111786-1	PLATE	A515 GR.70	35.00 mm	FA14017	JL.H	G.L	2014/11/17

CNC REFERENCE				SHT 1 OF 18	SHOP ORDER NUMBER			
OPERATIONS			QTY COMP	CHECK	CUTTING SHEET MODIFIED ON REV 1	TOTAL QTY 3.00 ul	LOCATION	ELEVATION & SECTION H-H
1	GUILLOTINE/SAW						3.00 ul	AS DRAWN
2	PLASMA/LASER							
3	PUNCH/DRILL/NOTCH						0.00 ul	OPP. HAND
4	BEND/ROLL/CHAMFER							

OTHERS  $\sqrt{Rz100}$

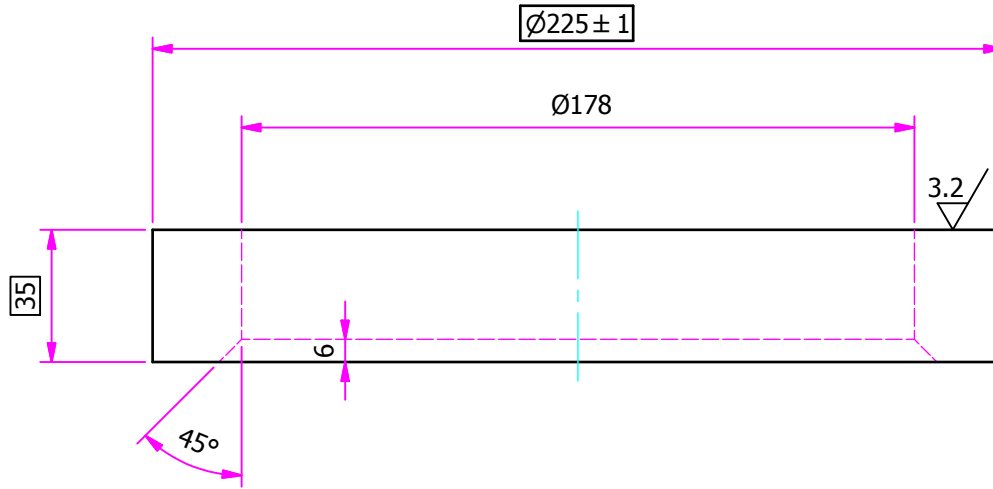


UNIT QTY	PART NUMBER	DESCRIPTION	MATERIAL	THICKNESS	PROJECT	DRAWN	CHK BY	CHK DATE
1.00 ul	E1A1111804-1	PLATE	A515 GR.70	35.00 mm	FA14017	JL.H	G.L	2014/11/17

CNC REFERENCE				SHT 1 OF 20	SHOP ORDER NUMBER	
OPERATIONS		QTY COMP	CHECK	CUTTING SHEET MODIFIED ON REV 1	TOTAL QTY 3.00 ul	LOCATION
1	GUILLOTINE/SAW					ELEVATION & SECTION E-E
2	PLASMA/LASER					3.00 ul AS DRAWN
3	PUNCH/DRILL/NOTCH					0.00 ul OPP. HAND
4	BEND/ROLL/CHAMFER					

其余 12.5/

ESTIMATED WEIGHT = 3.9 KG



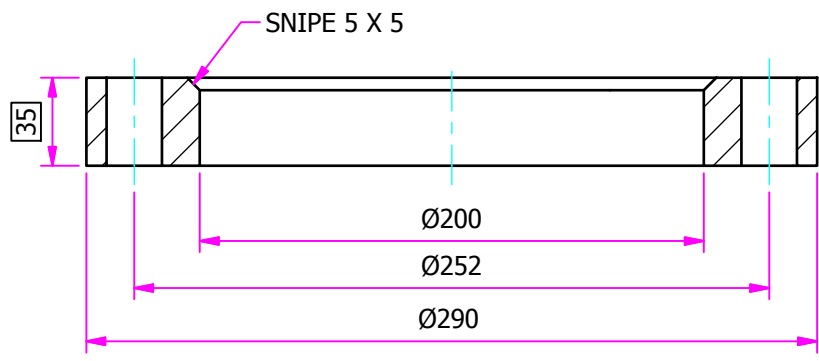
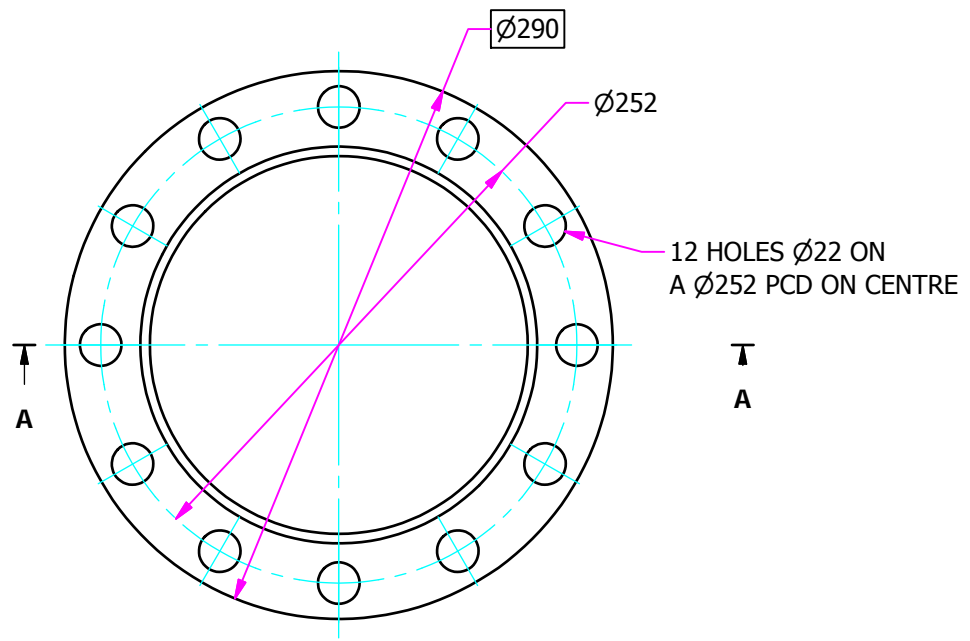
- 注：1、倒角去毛刺  
2、密封面要加工水纹

UNIT QTY	PART NUMBER	DESCRIPTION	MATERIAL	THICKNESS	PROJECT	DRAWN	CHK BY	CHK DATE
1.00 ul	E1A1111804-2	PLATE	A515 GR.70	35.00 mm	FA14017	JL.H	G.L	2014/11/17

CNC REFERENCE				SHT 2 OF 20	SHOP ORDER NUMBER		
OPERATIONS			QTY COMP	CHECK	CUTTING SHEET MODIFIED ON REV 1	TOTAL QTY 3.00 ul	LOCATION
1	GUILLOTINE/SAW						ELEVATION & SECTION E-E
2	PLASMA/LASER						3.00 ul AS DRAWN
3	PUNCH/DRILL/NOTCH						0.00 ul OPP. HAND
4	BEND/ROLL/CHAMFER						

全部  $\sqrt{12.5}$

ESTIMATED WEIGHT = 8.3 KG

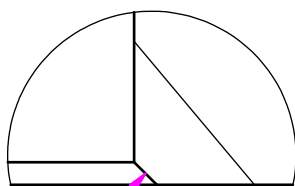
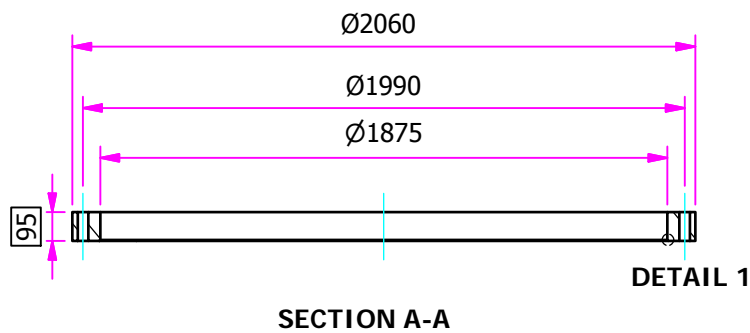
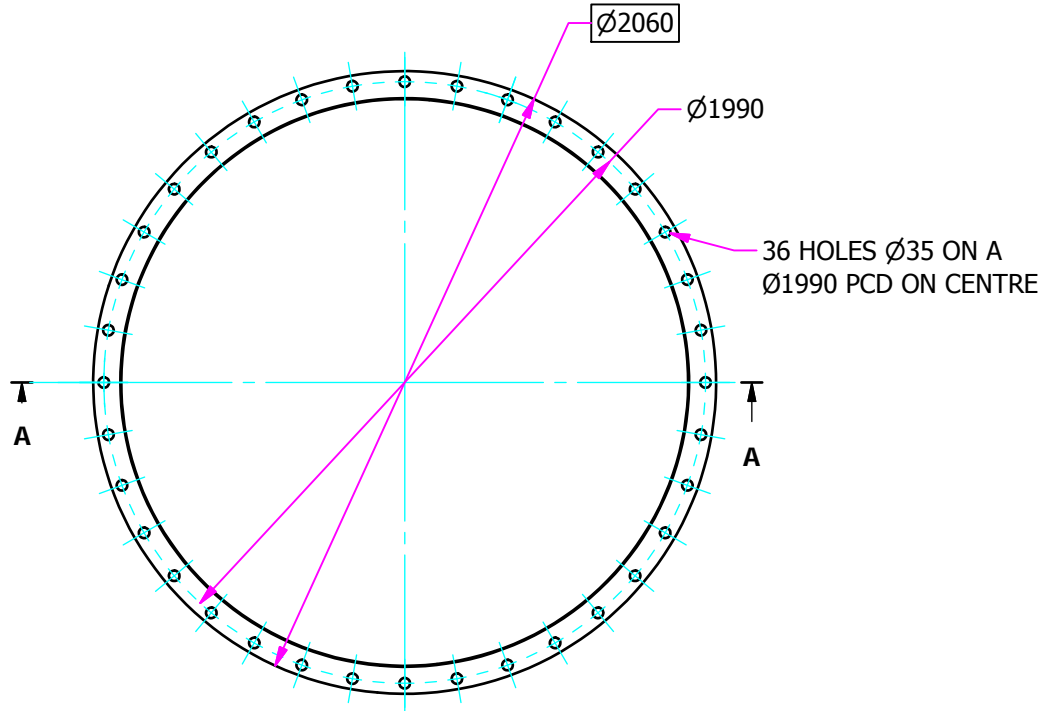


UNIT QTY	PART NUMBER	DESCRIPTION	MATERIAL	THICKNESS	PROJECT	DRAWN	CHK BY	CHK DATE
1.000 ul	E1A1144249-9	PLATE	A515 GR 70	95.00 mm	FA14017	JL.H	G.L	2014/11/17

CNC REFERENCE				SHT 9 OF 13	SHOP ORDER NUMBER		
OPERATIONS			QTY COMP	CHECK	CUTTING SHEET MODIFIED ON REV 1	TOTAL QTY 3.000 ul	LOCATION VIEW ON A-A
1	GUILLOTINE/SAW					3.000 ul	AS DRAWN
2	PLASMA/LASER						
3	PUNCH/DRILL/NOTCH					0.000 ul	OPP. HAND
4	BEND/ROLL/CHAMFER						

全部  $\nabla 12.5$

ESTIMATED WEIGHT = 400.4 KG



SNIPE 3 X 3

DETAIL 1

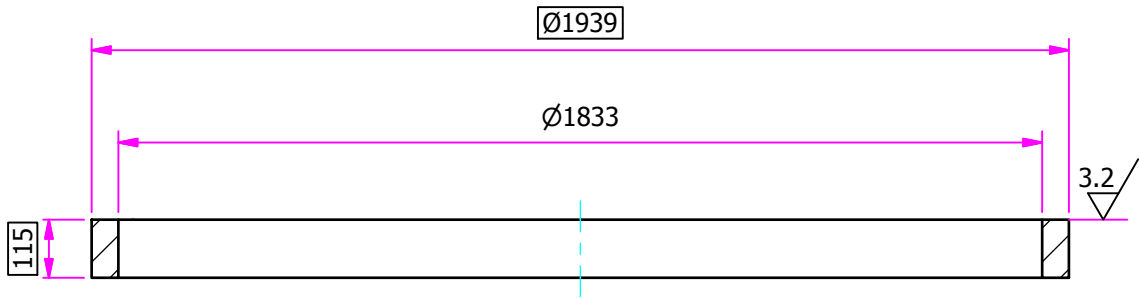
- 注：1、倒角去毛刺  
 2、法兰要打标识；  
 此法兰的标识为：FLANGE C-75-FF-72"-12 80148198 A515-70

UNIT QTY	PART NUMBER	DESCRIPTION	MATERIAL	THICKNESS	PROJECT	DRAWN	CHK BY	CHK DATE
1.000 ul	E1A1144249-10	PLATE	A515 GR 70	115.00 mm	FA14017	JL.H	G.L	2014/11/17

CNC REFERENCE				SHT 10 OF 13	SHOP ORDER NUMBER		
OPERATIONS			QTY COMP	CHECK	CUTTING SHEET MODIFIED ON REV 1	TOTAL QTY 3.000 ul	LOCATION VIEW ON A-A
1	GUILLOTINE/SAW					3.000 ul	AS DRAWN
2	PLASMA/LASER						
3	PUNCH/DRILL/NOTCH					0.000 ul	OPP. HAND
4	BEND/ROLL/CHAMFER						

12.5/  
其余 ∇

ESTIMATED WEIGHT = 283.5 KG



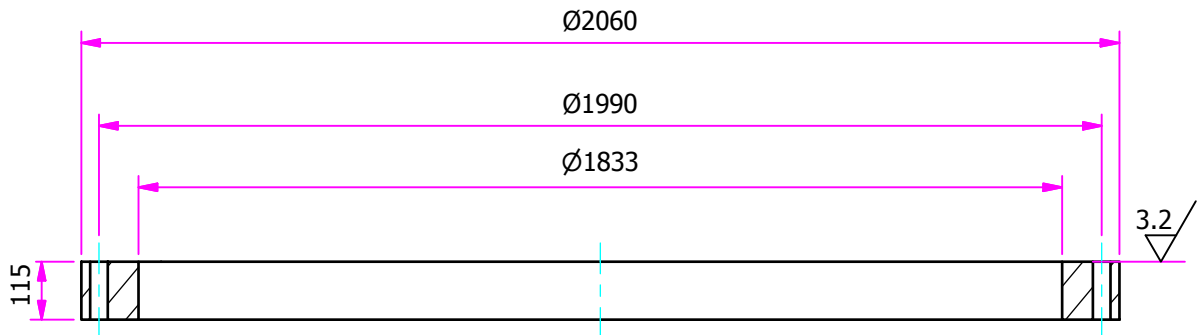
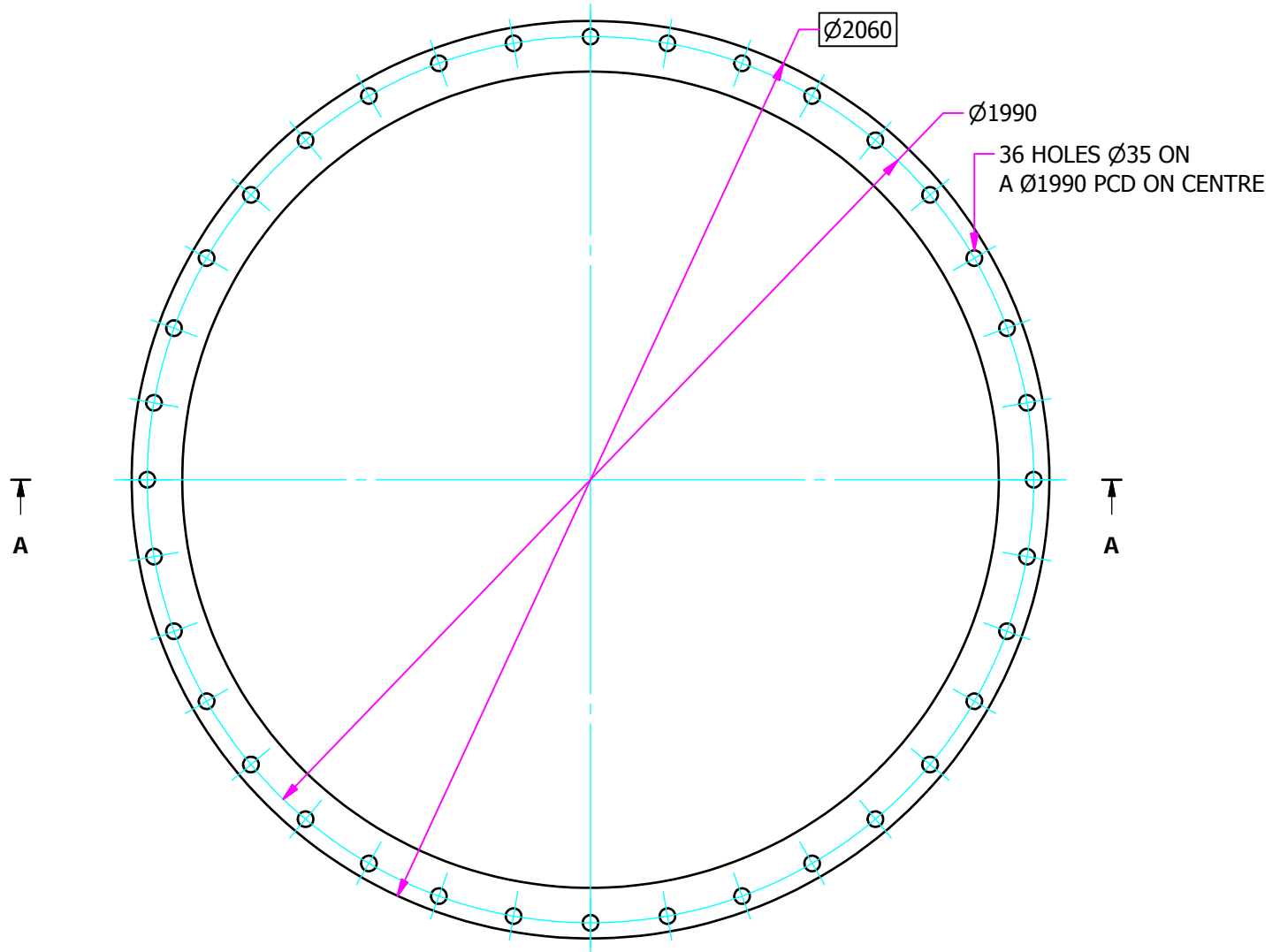
- 注：1、倒角去毛刺  
2、法兰密封面要加工水纹。

UNIT QTY	PART NUMBER	DESCRIPTION	MATERIAL	THICKNESS	PROJECT	DRAWN	CHK BY	CHK DATE
2.00 ul	E1A1144249-11	FLANGE	A515 GR.70		FA14017	JL.H	G.L	2014/11/17

CNC REFERENCE				SHT 11 OF 13	SHOP ORDER NUMBER	
OPERATIONS		QTY COMP	CHECK	CUTTING SHEET MODIFIED ON REV	TOTAL QTY 6.00 ul	LOCATION
1	GUILLOTINE/SAW					6.00 ul AS DRAWN
2	PLASMA/LASER					
3	PUNCH/DRILL/NOTCH					0.00 ul OPP. HAND
4	BEND/ROLL/CHAMFER					

其余 12.5/

ESTIMATED WEIGHT = 595.3 KG



SECTION A-A

- 注：1、倒角去毛刺  
 2、法兰要打标识；  
 此法兰的标识为：FLANGE B 75-FF-72"-12 80148198 A515-70  
 3、法兰密封面要加工水纹。

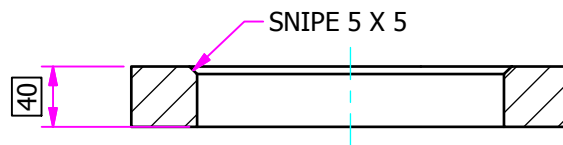
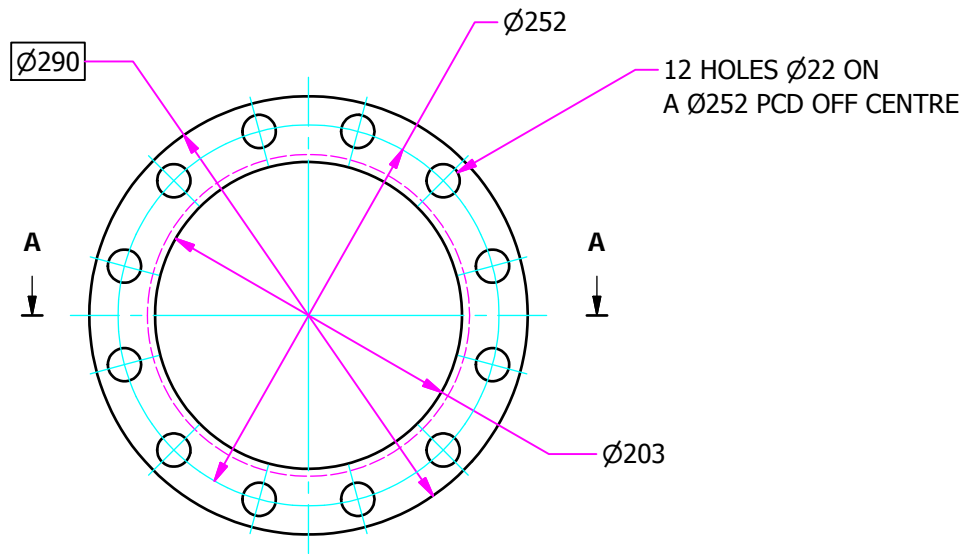


UNIT QTY	PART NUMBER	DESCRIPTION	MATERIAL	THICKNESS	PROJECT	DRAWN	CHK BY	CHK DATE
1.00 ul	E1A1111928-6	PLATE	A515 GR.70	40.00 mm	FA14017	JL.H	G.L	2014/11/17

CNC REFERENCE	SHT 6 OF 14	SHOP ORDER NUMBER
---------------	-------------	-------------------

OPERATIONS	QTY COMP	CHECK	CUTTING SHEET MODIFIED ON REV 1	TOTAL QTY 3.00 ul	LOCATION
1 GUILLOTINE/SAW					SECTION C-C & ELEVATION
2 PLASMA/LASER					3.00 ul AS DRAWN
3 PUNCH/DRILL/NOTCH					0.00 ul OPP. HAND
4 BEND/ROLL/CHAMFER					

ALL  $\sqrt{12.5}$

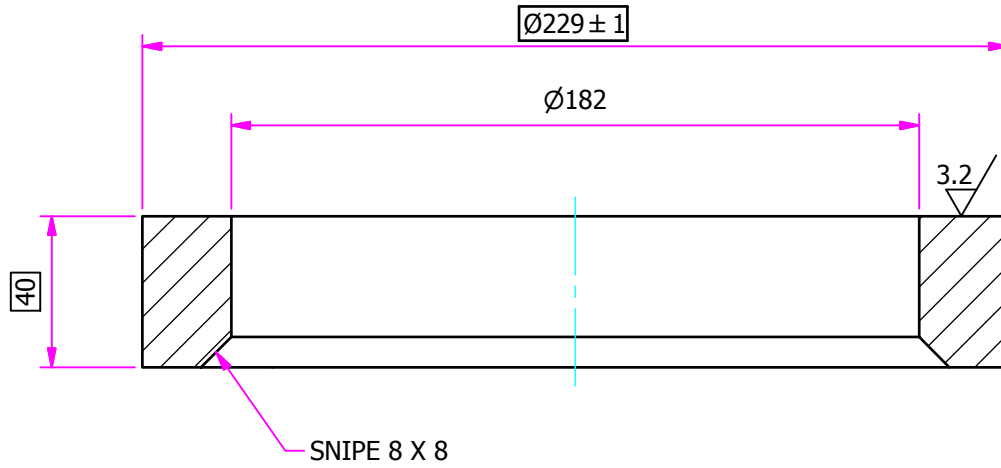


SECTION A-A

UNIT QTY	PART NUMBER	DESCRIPTION	MATERIAL	THICKNESS	PROJECT	DRAWN	CHK BY	CHK DATE
1.00 ul	E1A1111928-7	PLATE	A515 GR.70	40.00 mm	FA14017	JL.H	G.L	2014/11/17

CNC REFERENCE				SHT 7 OF 14	SHOP ORDER NUMBER			
OPERATIONS			QTY COMP	CHECK	CUTTING SHEET MODIFIED ON REV 1	TOTAL QTY 3.00 ul	LOCATION	ELEVATION & SECTION C-C
1	GUILLOTINE/SAW						3.00 ul	AS DRAWN
2	PLASMA/LASER							
3	PUNCH/DRILL/NOTCH						0.00 ul	OPP. HAND
4	BEND/ROLL/CHAMFER							

OTHERS  $\nabla$  6.3



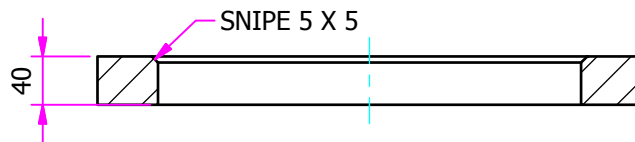
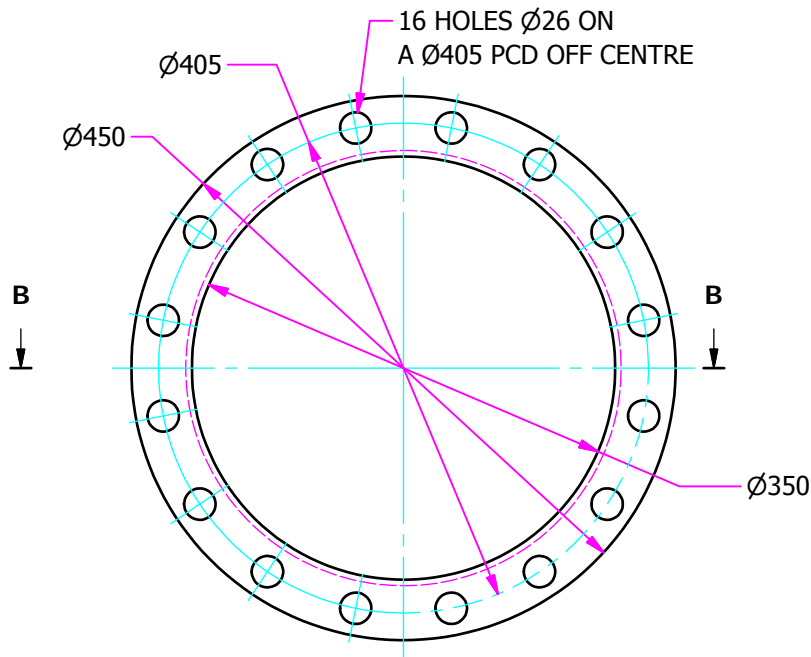
注：1、倒角去毛刺  
2、密封面要加工水纹

UNIT QTY	PART NUMBER	DESCRIPTION	MATERIAL	THICKNESS	PROJECT	DRAWN	CHK BY	CHK DATE
1.00 ul	E1A1121625-8	PLATE	A515 GR.70	40.00 mm	FA14017	JL.H	G.L	2014/11/17

CNC REFERENCE				SHT 8	OF 17	SHOP ORDER NUMBER		
OPERATIONS			QTY COMP	CHECK	CUTTING SHEET MODIFIED ON REV 1	TOTAL QTY 3.00 ul	LOCATION ELEVATION	
1	GUILLOTINE/SAW						3.00 ul	AS DRAWN
2	PLASMA/LASER							
3	PUNCH/DRILL/NOTCH						0.00 ul	OPP. HAND
4	BEND/ROLL/CHAMFER							

ALL  $\sqrt{6.3}$

ESTIMATED WEIGHT = 17 KG



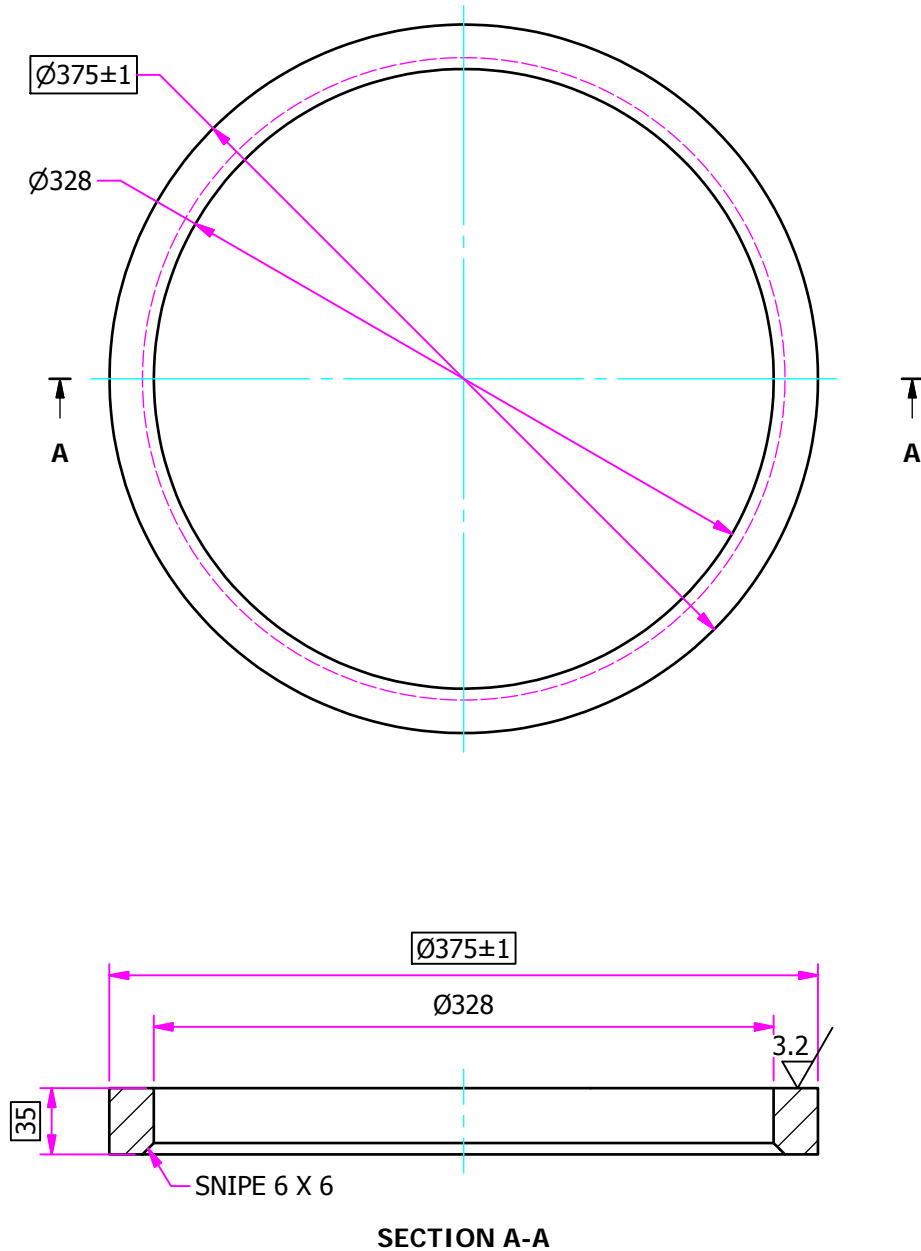
SECTION B-B

UNIT QTY	PART NUMBER	DESCRIPTION	MATERIAL	THICKNESS	PROJECT	DRAWN	CHK BY	CHK DATE
1.00 ul	E1A1121625-9	PLATE	A515 GR.70		FA14017	JL.H	G.L	2014/11/17

CNC REFERENCE				SHT 9 OF 17	SHOP ORDER NUMBER	
OPERATIONS		QTY COMP	CHECK	CUTTING SHEET MODIFIED ON REV 1	TOTAL QTY 3.00 ul	LOCATION ELEVATION
1	GUILLOTINE/SAW					3.00 ul AS DRAWN
2	PLASMA/LASER					
3	PUNCH/DRILL/NOTCH					0.00 ul OPP. HAND
4	BEND/ROLL/CHAMFER					

OTHERS  $\frac{6.3}{\nabla}$

ESTIMATED WEIGHT = 7.0 KG

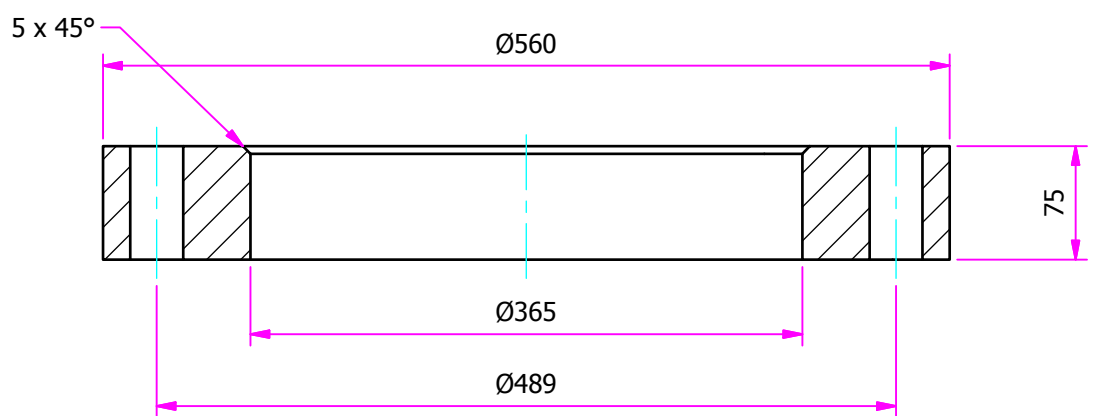
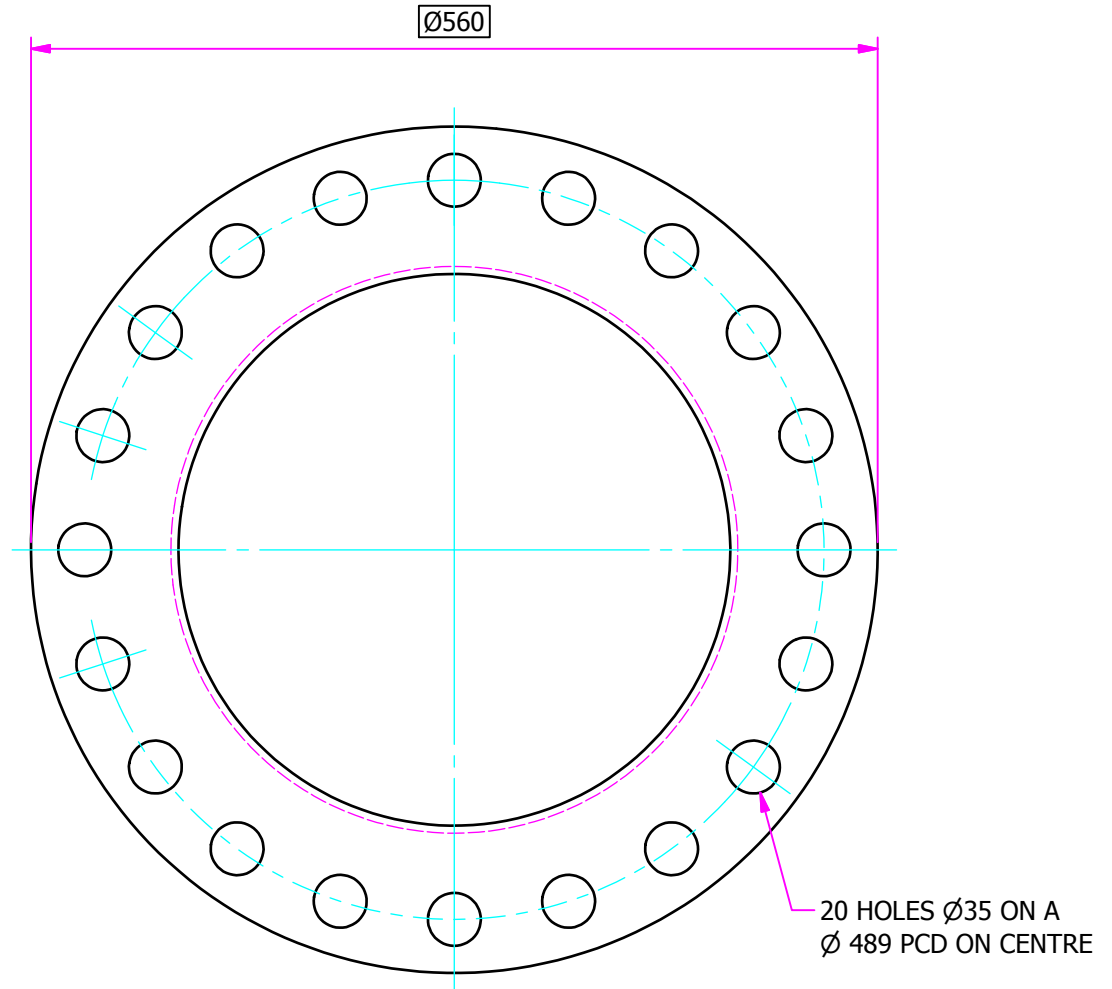


注：1、倒角毛刺  
2、密封面要加工水纹

UNIT QTY	PART NUMBER	DESCRIPTION	MATERIAL	THICKNESS	PROJECT	DRAWN	CHK BY	CHK DATE
1.00 ul	E1A1121620-6	PLATE	A515 GR.70	75.00 mm	FA14017	K.C	G.L	11/19/2014

CNC REFERENCE				SHT 6	OF 7	SHOP ORDER NUMBER	
OPERATIONS			QTY COMP	CHECK	CUTTING SHEET MODIFIED ON REV 1	TOTAL QTY 3.00 ul	LOCATION SECTION C-C
1	GUILLOTINE/SAW						3.00 ul
2	PLASMA/LASER						AS DRAWN
3	PUNCH/DRILL/NOTCH						0.00 ul
4	BEND/ROLL/CHAMFER						OPP. HAND

全部  $\sqrt{12.5}$

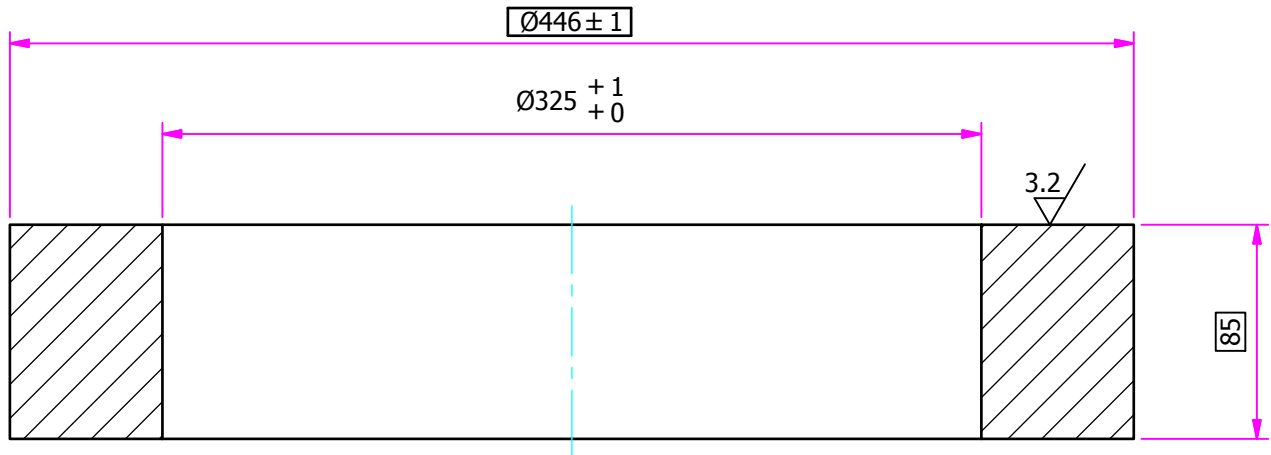


注：  
未标注倒角 0.5 x 45°

UNIT QTY	PART NUMBER	DESCRIPTION	MATERIAL	THICKNESS	PROJECT	DRAWN	CHK BY	CHK DATE
1.00 ul	E1A1121620-7	PLATE	A515 GR.70	85.00 mm	FA14017	K.C	G.L	11/19/2014

CNC REFERENCE				SHT 7	OF 7	SHOP ORDER NUMBER		
OPERATIONS			QTY COMP	CHECK	CUTTING SHEET MODIFIED ON REV 1	TOTAL QTY 3.00 ul	LOCATION SECTION C-C	
1	GUILLOTINE/SAW						3.00 ul	AS DRAWN
2	PLASMA/LASER							
3	PUNCH/DRILL/NOTCH						0.00 ul	OPP. HAND
4	BEND/ROLL/CHAMFER							

OTHERS  $12.5/\nabla$

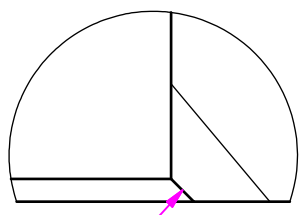
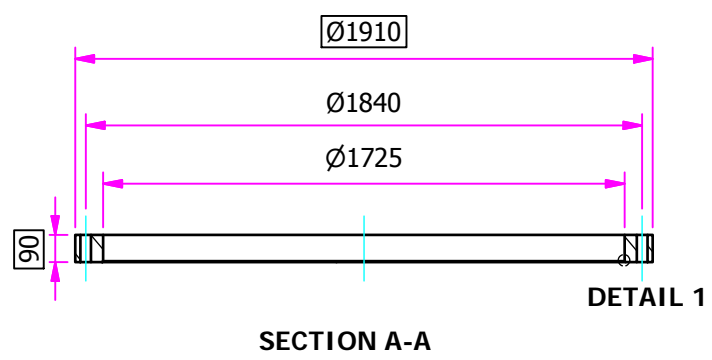
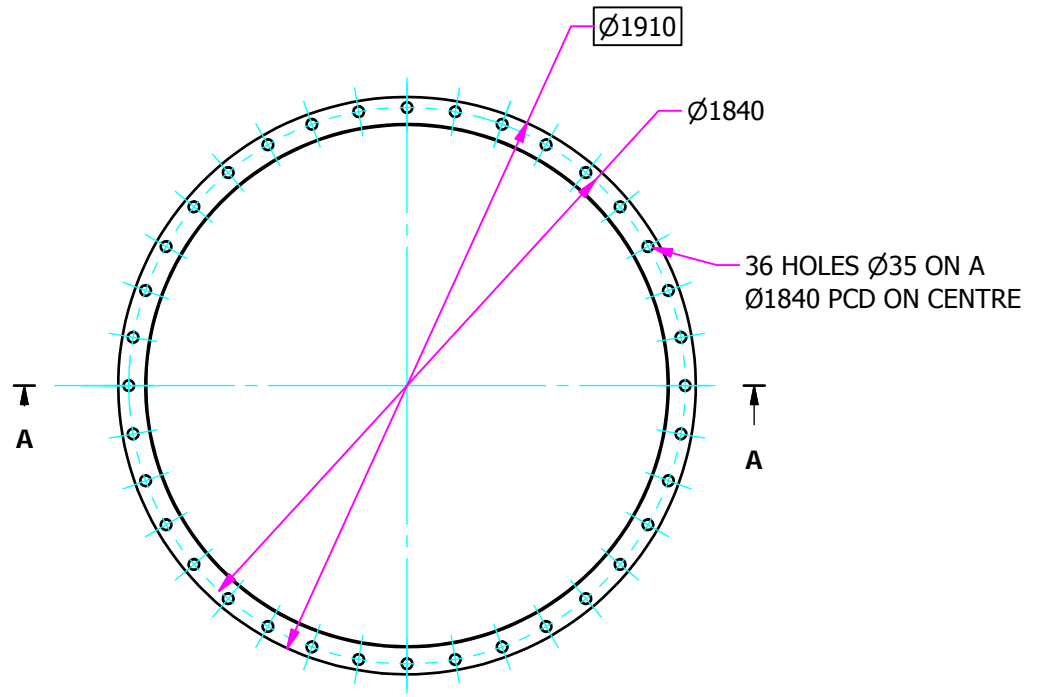


注：  
未标注倒角 0.5 x 45°  
密封面加工水纹

UNIT QTY	PART NUMBER	DESCRIPTION	MATERIAL	THICKNESS	PROJECT	DRAWN	CHK BY	CHK DATE
1.000 ul	E1A1111854-4	PLATE	A515 GR 70	90.00 mm	FA14017	JL.H	G.L	2014/11/17

CNC REFERENCE				SHT 4 OF 10	SHOP ORDER NUMBER	
OPERATIONS		QTY COMP	CHECK	CUTTING SHEET MODIFIED ON REV 1	TOTAL QTY 3.000 ul	LOCATION ELEVATION
1	GUILLOTINE/SAW					3.000 ul AS DRAWN
2	PLASMA/LASER					
3	PUNCH/DRILL/NOTCH					0.000 ul OPP. HAND
4	BEND/ROLL/CHAMFER					

全部 12.5/▽



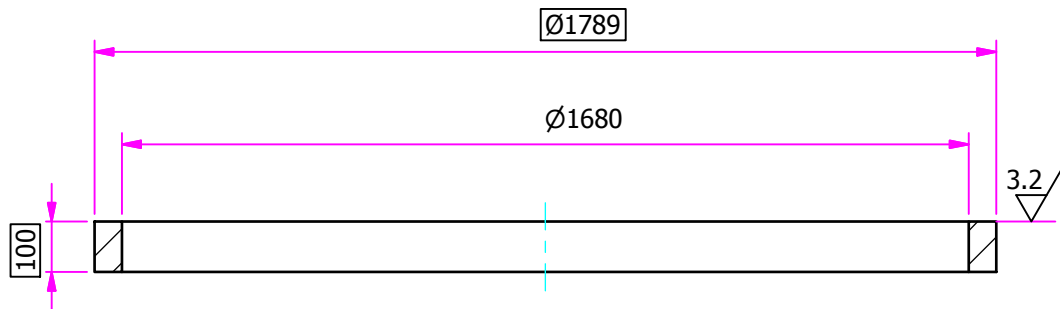
注：1、倒角去毛刺  
 2、法兰要打标识；  
 此法兰的标识为：FLANGE C-75-FF-66"-10 80148198 A515-70  
 3、法兰密封面要加工水纹。

SNIPE 3 X 3  
 DETAIL 1

UNIT QTY	PART NUMBER	DESCRIPTION	MATERIAL	THICKNESS	PROJECT	DRAWN	CHK BY	CHK DATE
1.000 ul	E1A1111854-5	PLATE	A515 GR 70	100.00 mm	FA14017	JL.H	G.L	2014/11/17

CNC REFERENCE				SHT 5 OF 10	SHOP ORDER NUMBER			
OPERATIONS			QTY COMP	CHECK	CUTTING SHEET MODIFIED ON REV 1	TOTAL QTY 3.000 ul	LOCATION ELEVATION	
1	GUILLOTINE/SAW						3.000 ul	AS DRAWN
2	PLASMA/LASER							
3	PUNCH/DRILL/NOTCH						0.000 ul	OPP. HAND
4	BEND/ROLL/CHAMFER							

其余  $\nabla$  12.5

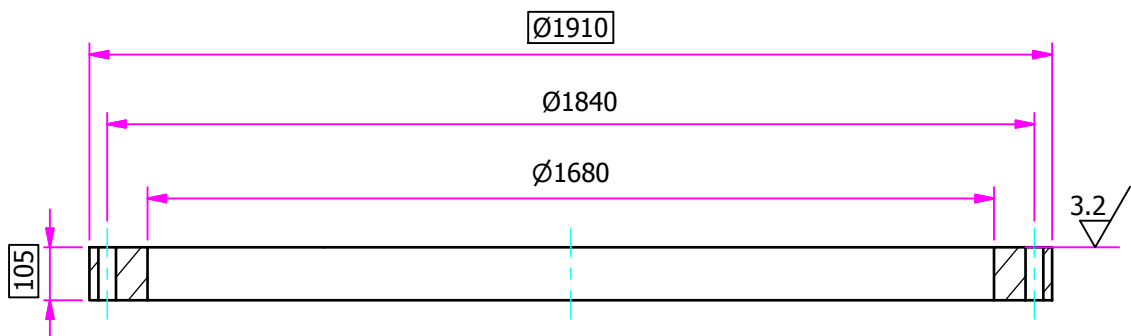
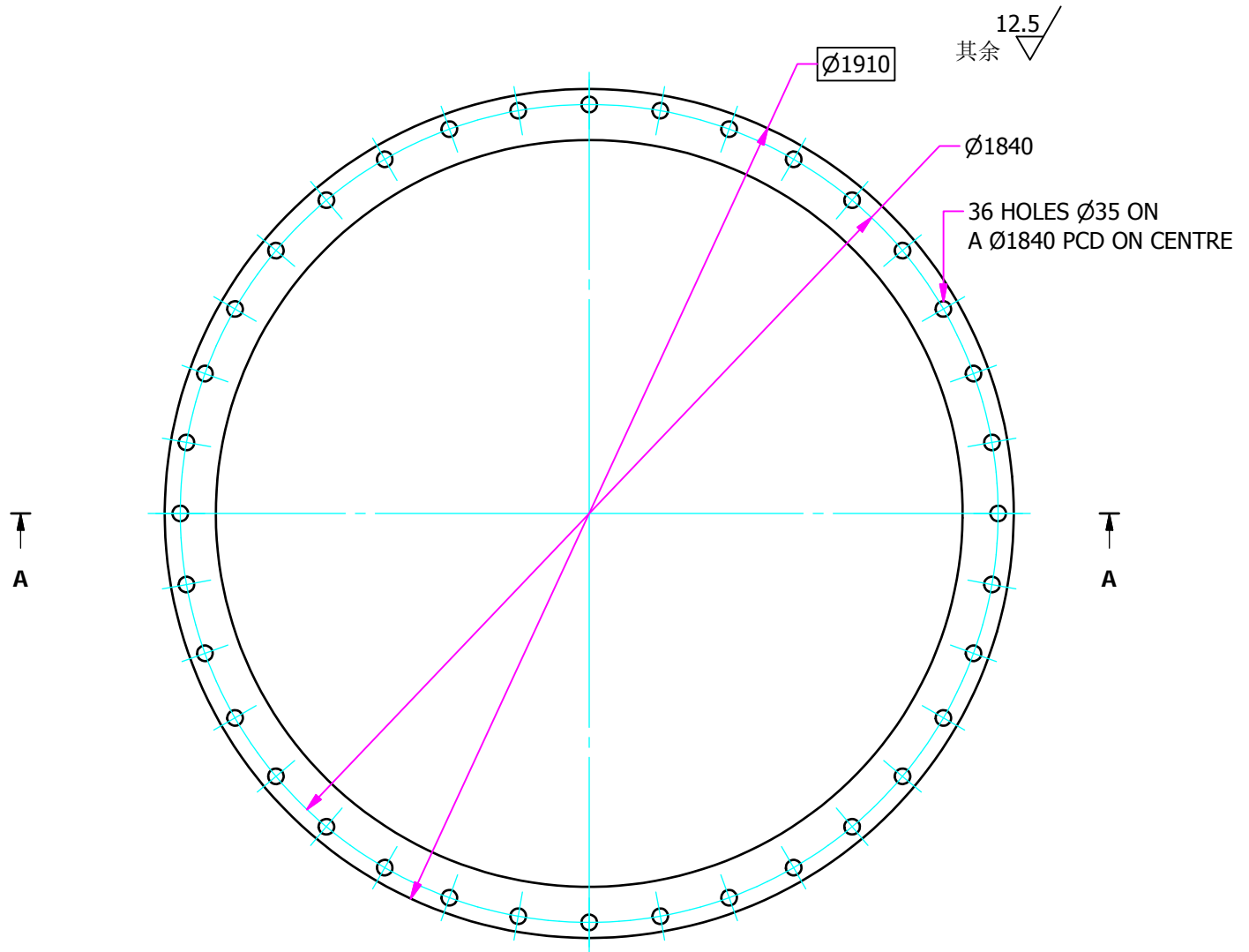


注：1、倒角去毛刺  
3、法兰密封面要加工水纹。



UNIT QTY	PART NUMBER	DESCRIPTION	MATERIAL	THICKNESS	PROJECT	DRAWN	CHK BY	CHK DATE
1.00 ul	E1A111854-6	PLATE	A515 GR.70		FA14017	JL.H	G.L	2014/11/17

CNC REFERENCE				SHT 6 OF 10	SHOP ORDER NUMBER			
OPERATIONS			QTY COMP	CHECK	CUTTING SHEET MODIFIED ON REV	TOTAL QTY	LOCATION	ELEVATION
1	GUILLOTINE/SAW					3.00 ul	3.00 ul	AS DRAWN
2	PLASMA/LASER							
3	PUNCH/DRILL/NOTCH						0.00 ul	OPP. HAND
4	BEND/ROLL/CHAMFER							



SECTION A-A

- 注：1、倒角去毛刺  
 2、法兰要打标识；  
 此法兰的标识为：FLANGE B-75-FF-66"-10 80148198 A515-70  
 3、法兰密封面要加工水纹。