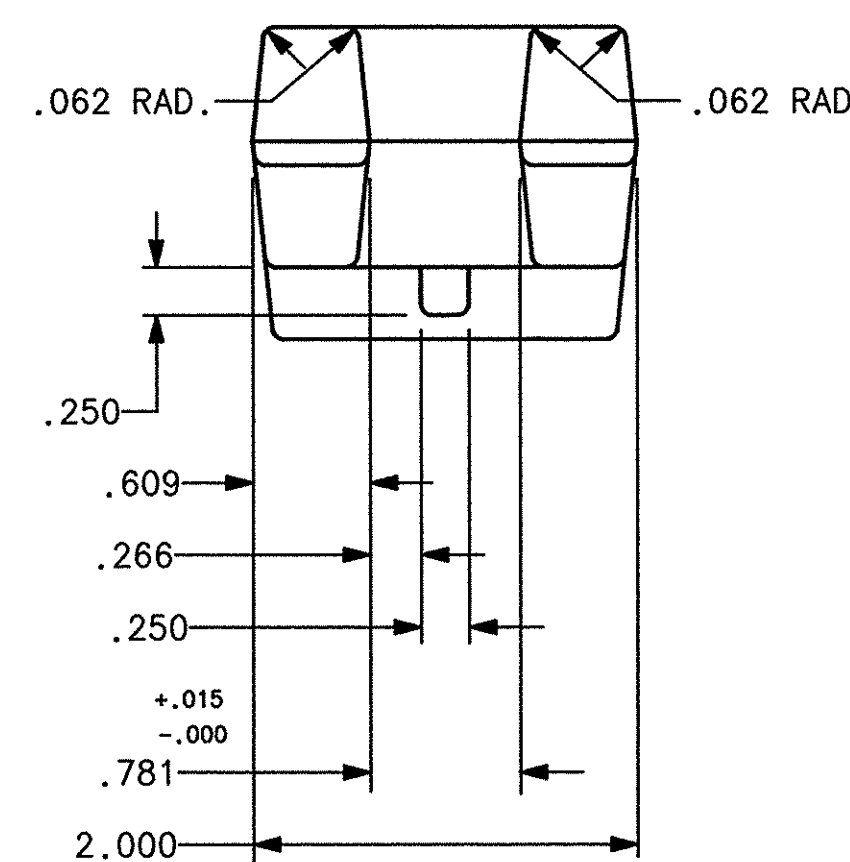
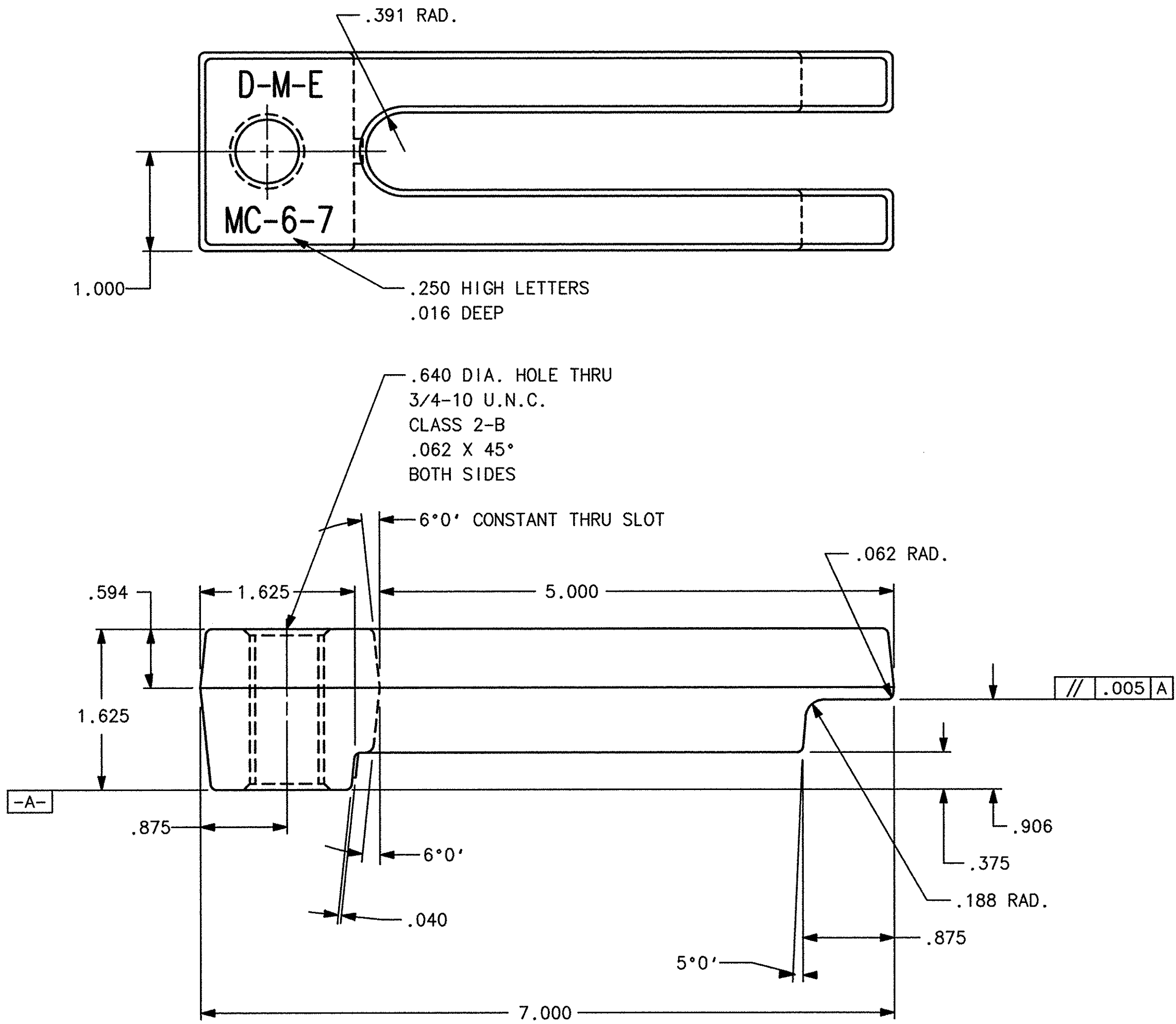


E. C. NO.	REV.	REVISIONS	
		DESCRIPTION	DATE
	A	REDRAWN AND RELEASED ON CAD	8-28-91
1854	B1	MATERIAL SPECIFICATION WAS AISI 1030 STEEL	
	B2	CORE HARDNESS SPECIFICATION WAS R/C 24-28	
	B3	REVISED DETAIL & ASSEMBLY DESCRIPTIONS	
	B4	ADDED NOTE #4 TO POINT OUT FORGING TOLERANCES	9-6-96
	B5	ELIMINATED SURFACE HARDENING AND SPECS.	
	B6	ELIMINATED CARBONITRIDING AND SPECS.	
	B7	DRAWING TRANSFERRED TO SDRC	



- NOTES:
1. RADII TO BE .094 UNLESS OTHERWISE SPECIFIED.
  2. DRAFT ANGLES TO BE 7° MAX. UNLESS OTHERWISE SPECIFIED.
  3. BLACK OXIDE FINISH.
  4. TOLERANCES SHOWN IN TITLE BLOCK BELOW HAVE BEEN ADJUSTED TO REFLECT THE FORGING PROCESS.

(B4)  
(B5)  
(B6)

共726件

(B1) MATERIAL AISI 4140 STEEL FORGING	REMOVE ALL BURRS AND BREAK ALL SHARP EDGES 0.015 MAX UNLESS OTHERWISE SPECIFIED	DIMENSIONS ARE IN INCHES UNLESS OTHERWISE SPECIFIED TOLERANCES ARE: FRACTIONS ± .015 DECIMALS ± .015 UNLESS OTHERWISE SPECIFIED ANGLES ± 0° 30'	DRAWN ADAS	DATE 12-3-90	SCALE FULL	PROJECT NO. 1575
(B2) HEAT TREAT R/C 34-38			CHECKED R.W.D.	DATE 8-29-91	CATALOG NO. / PART NO. MC-6-7	
			APPROVED FAS	DATE 9-6-96	(B3) DRAWING NO. ME-0617-DT-073-B	
			SHEET OF			

This document is proprietary to D-M-E Company, A Eirehild Industries Co., and is not to be used, copied, reproduced, or disclosed in any manner whatsoever without the prior specific written permission of an authorized official of D-M-E Company.

ME-0617-DT-073-B  
MC-6-7