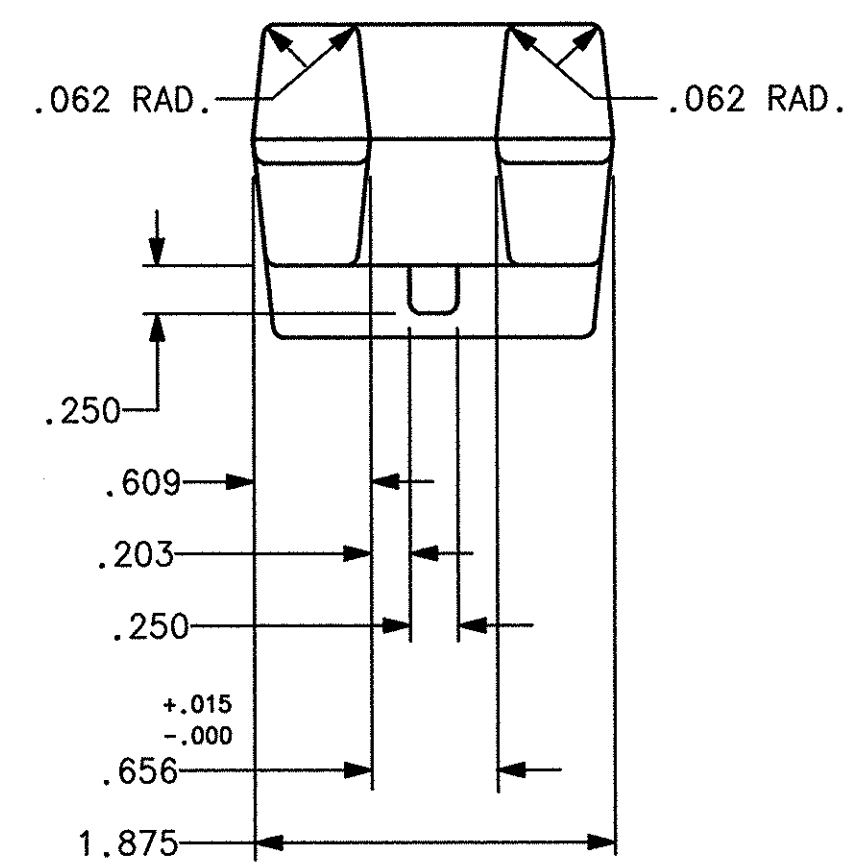
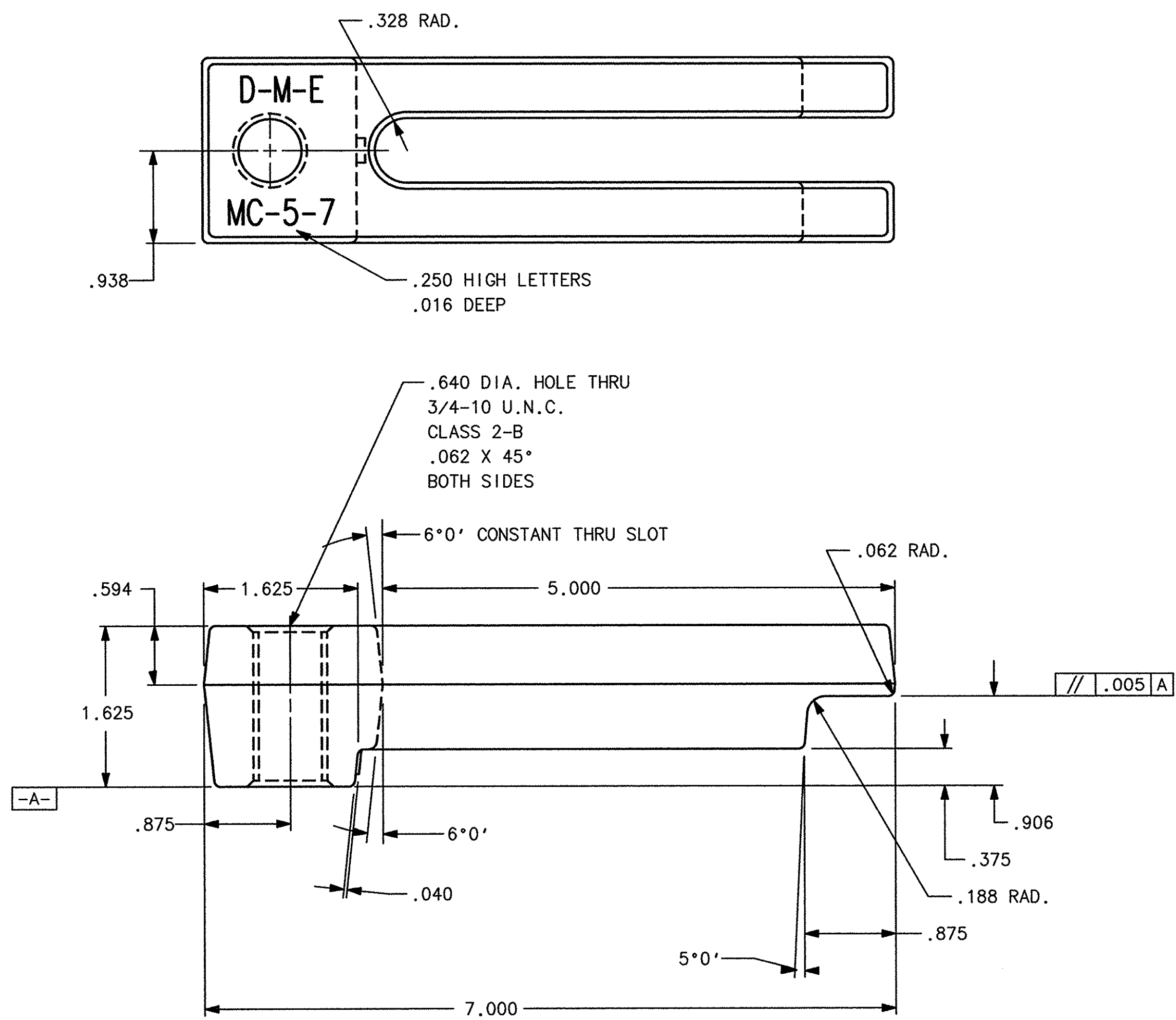


REVISIONS				
E.C. NO.	REV.	DESCRIPTION	BY	DATE
	A	REDRAWN AND RELEASED ON CAD	ADAS	8-28-91
1854	B1	MATERIAL SPECIFICATION WAS AISI 1030 STEEL	KERN	9-6-96
	B2	CORE HARDNESS SPECIFICATION WAS R/C 24-28		
	B3	REVISED DETAIL & ASSEMBLY DESCRIPTIONS		
	B4	ADDED NOTE #4 TO POINT OUT FORGING TOLERANCES		
	B5	ELIMINATED SURFACE HARDENING AND SPECS.		
	B6	ELIMINATED CARBONITRIDING AND SPECS.		
	B7	DRAWING TRANSFERRED TO SDRC		



- NOTES:
1. RADII TO BE .094 UNLESS OTHERWISE SPECIFIED.
 2. DRAFT ANGLES TO BE 7° MAX. UNLESS OTHERWISE SPECIFIED.
 3. BLACK OXIDE FINISH.
 4. TOLERANCES SHOWN IN TITLE BLOCK BELOW HAVE BEEN ADJUSTED TO REFLECT THE FORGING PROCESS.

(B4)
(B5)
(B6)

共567件

(B3)

(B1) MATERIAL AISI 4140 STEEL FORGING	REMOVE ALL BURRS AND BREAK ALL SHARP EDGES .015 MAX	DIMENSIONS ARE IN INCHES UNLESS OTHERWISE SPECIFIED	DRAWN ADAS	DATE 12-3-90	SCALE FULL	PROJECT NO. 1575
(B2) HEAT TREAT R/C 34-38	UNLESS OTHERWISE SPECIFIED	TOLERANCES ARE: FRACTIONS ± .015 .00 ± .015 .000 ± .010 ANGLES ± 0° 30'	CHECKED R.W.D.	DATE 8-29-91	CATALOG NO. / PART NO. MC-5-7	
			APPROVED FAS	DATE 9-6-96	DRAWING NO. ME-0617-DT-071-B	

ME-0617-DT-071-B
MC-5-7

This document is proprietary to D-M-E Company, A. F. Irchid, Industries Co., and may be used in any manner without the prior specific written permission of an authorized official of D-M-E Company.