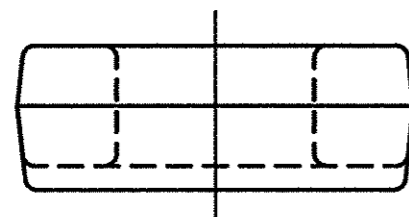
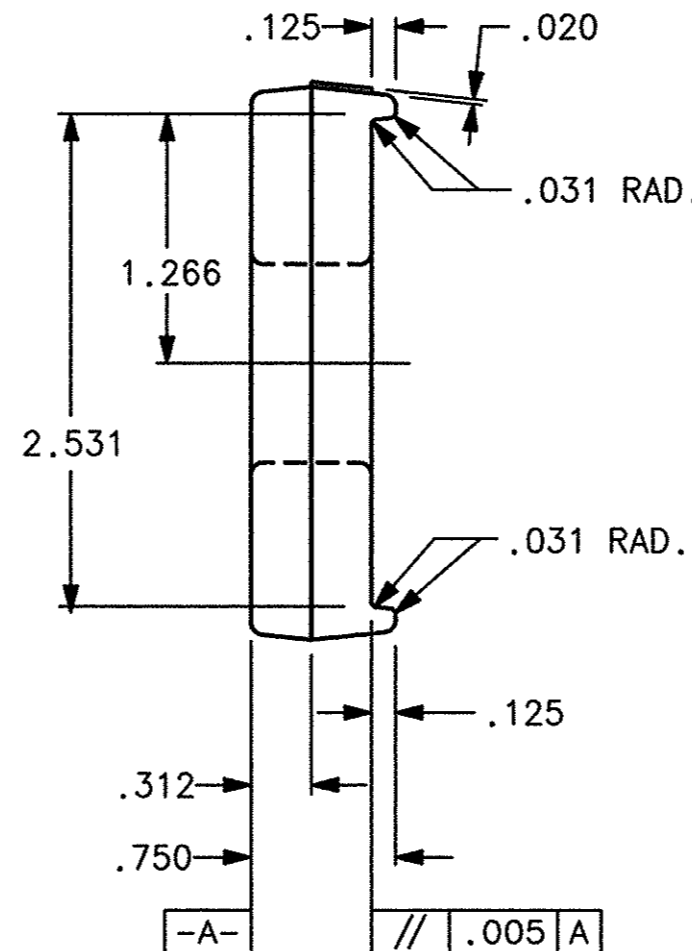
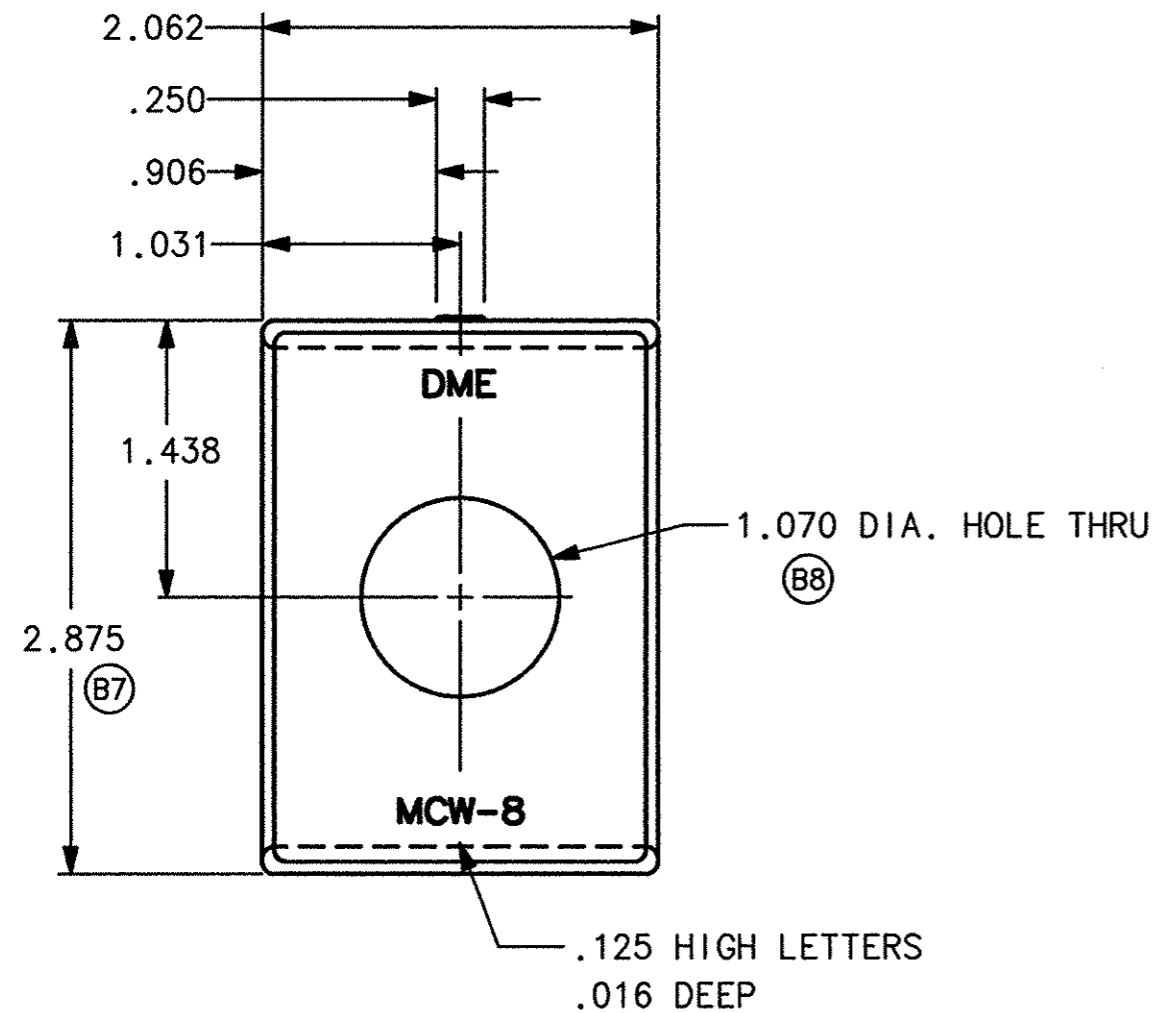


This document is proprietary to D-M-E Company, A Forchard Industries Co., and is not to be used, copied, reproduced, or disseminated in any manner without the written permission of an authorized official of D-M-E Company.



REVISIONS				
E.C. NO.	REV.	DESCRIPTION	BY	DATE
	A	REDRAWN AND RELEASED ON CAD	ADAS	8-28-91
1874	B1	MATERIAL SPECIFICATION WAS AISI 1030 STEEL	KERN	9-6-96
	B2	CORE HARDNESS SPECIFICATION WAS R/C 24-28		
	B3	REVISED DETAIL & ASSEMBLY DESCRIPTIONS		
	B4	ADDED NOTE #4 TO POINT OUT FORGING TOLERANCES		
	B5	ELIMINATED SURFACE HARDENING AND SPECS.		
	B6	ELIMINATED CARBONITRIDING AND SPECS.		
	B7	DIMENSION WAS 1.875		
	B8	DIMENSION WAS 1.031 DIA.		
	B9	DRAWING TRANSFERED TO SDRC		

NOTES:

1. RADII TO BE .062 UNLESS OTHERWISE SPECIFIED.
2. DRAFT ANGLES TO BE 7° MAX. UNLESS OTHERWISE SPECIFIED.
3. BLACK OXIDE FINISH.
4. TOLERANCES SHOWN IN TITLE BLOCK BELOW HAVE BEEN ADJUSTED TO REFLECT THE FORGING PROCESS.

(B1)	MATERIAL	REMOVE ALL BURRS AND BREAK ALL SHARP EDGES .015 MAX UNLESS OTHERWISE SPECIFIED	DIMENSIONS ARE IN INCHES UNLESS OTHERWISE SPECIFIED TOLERANCES ARE: FRACTIONS ± .015 .00 ± .015 .000 ± .010 ANGLES ± 0° 30'	DRAWN	ADAS	DATE	12-6-90
	AISI 4140 STEEL FORGING			CHECKED	R.W.D.	DATE	8-29-91
(B2)	HEAT TREAT			APPROVED	FGS	DATE	9-6-96
	R/C 34-38			SHEET		OF	

共1088件

DETAIL NAME		CLAMP WASHER FOR 1" DIA. BOLT	
ASSEMBLY NAME		MOLD AND DIE CLAMPS	
SCALE	FULL	PROJECT NO.	1575
CATALOG NO. / PART NO.		MCW-8	
DRAWING NO.	ME-0617-DT-078-B		

ME-0617-DT-078-B
 MCW-8